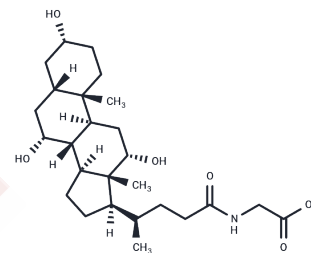


## Glycocholic acid

## Chemical Properties

CAS No. :	475-31-0
Formula:	C <sub>26</sub> H <sub>43</sub> NO <sub>6</sub>
Molecular Weight:	465.62
Storage:	Keep away from moisture Powder: -20°C for 3 years   In solvent: -80°C for 1 year <i>Actual storage temperature shall be subject to the COA.</i>



## Biological Description

Description	Glycocholic acid (Glycocholate) is a bile acid with anticancer activity. Glycocholic acid targets against pump resistance-related and non-pump resistance-related pathways.
Targets(IC50)	Endogenous Metabolite
Kinase Assay	Topoisomerase I-DNA interaction: Annealed 25-mer duplex of oligonucleotide-1 and oligonucleotide-2 is incubated with 25 or 50 units of rat liver topoisomerase I at 8 °C for 15 min in the presence or absence of betulinic acid in binding buffer. After incubation the reaction mixtures are electrophoresed in 7% non-denaturing polyacrylamide gel at 4 °C in 0.167 × TBE buffer and DNA bands are stained with ethidium bromid

## Solubility Information

Solubility	DMSO: 84 mg/mL (180.4 mM),Sonication is recommended. (< 1 mg/ml refers to the product slightly soluble or insoluble)
In vivo Formulation	10% DMSO+40% PEG300+5% Tween 80+45% Saline: 3.3 mg/mL (7.09 mM),Sonication is recommended. <i>Please add the solvents sequentially, clarifying the solution as much as possible before adding the next one. Dissolve by heating and/or sonication if necessary. Working solution is recommended to be prepared and used immediately. The formulation provided above is for reference purposes only. In vivo formulations may vary and should be modified based on specific experimental conditions.</i>

### Preparing Stock Solutions

---

	1mg	5mg	10mg
1 mM	2.1477 mL	10.7384 mL	21.4767 mL
5 mM	0.4295 mL	2.1477 mL	4.2953 mL
10 mM	0.2148 mL	1.0738 mL	2.1477 mL
50 mM	0.043 mL	0.2148 mL	0.4295 mL

---

Please select the appropriate solvent to prepare the stock solution, according to the solubility of the product in different solvents. Please use it as soon as possible.

Note: The dilution table applies only to solid products. For liquid products, please calculate the stock solution based on the stated concentration and/or density.

### Reference

Zhang A, et al. Clin Chim Acta. 2013 Mar 15;418:86-90.

Qiu Q, Guo G, Guo X, et al. P53 Deficiency Accelerate Esophageal Epithelium Intestinal Metaplasia Malignancy. Biomedicines. 2023, 11(3): 882.

Chen X, Cao S, Tao L, et al. Establishment of MS LOC platform and its pilot application in clinical lipidomics. Talanta. 2024: 127314.

**Inhibitor · Natural Compounds · Compound Libraries · Recombinant Proteins**

This product is for Research Use Only · Not for Human or Veterinary or Therapeutic Use

Tel: 781-999-4286 E\_mail: info@targetmol.com Address: 34 Washington Street, Wellesley Hills, MA 02481