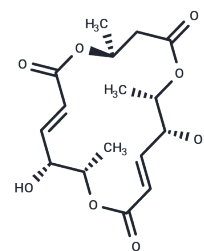


(+)-Macrosphelide A

Chemical Properties

CAS No. :	172923-77-2
Formula:	C ₁₆ H ₂₂ O ₈
Molecular Weight:	342.344
Storage:	Powder: -20°C for 3 years In solvent: -80°C for 1 year Actual storage temperature shall be subject to the COA.



Biological Description

Description	(+)-Macrosphelide A is a fungal metabolite originally isolated from <i>Microsphaeropsis</i> . It inhibits adhesion of HL-60 human leukemia cells to human umbilical vein endothelial cells (HUVECs) in a concentration-dependent manner. It also inhibits the growth of SKOV3 ovarian cancer cells in a concentration-dependent manner. (+)-Macrosphelide A inhibits the growth of Gram-positive bacteria, including <i>B. subtilis</i> , <i>M. luteus</i> , <i>B. thuringiensis</i> , and <i>S. aureus</i> (MICs = 143, 143, 57, and 57 µg/ml, respectively), but not Gram-negative bacteria or fungi.
Targets(IC50)	Others,Antibiotic

Solubility Information

Solubility	DMSO: Soluble Chloroform: Soluble Methanol: Soluble (< 1 mg/ml refers to the product slightly soluble or insoluble)
------------	---

Preparing Stock Solutions

	1mg	5mg	10mg
1 mM	2.9211 mL	14.6054 mL	29.2107 mL
5 mM	0.5842 mL	2.9211 mL	5.8421 mL
10 mM	0.2921 mL	1.4605 mL	2.9211 mL
50 mM	0.0584 mL	0.2921 mL	0.5842 mL

Please select the appropriate solvent to prepare the stock solution, according to the solubility of the product in different solvents. Please use it as soon as possible.

Note: The dilution table applies only to solid products. For liquid products, please calculate the stock solution based on the stated concentration and/or density.

Inhibitor · Natural Compounds · Compound Libraries · Recombinant Proteins

This product is for Research Use Only · Not for Human or Veterinary or Therapeutic Use

Tel:781-999-4286 E_mail:info@targetmol.com Address:34 Washington Street,Wellesley Hills,MA 02481