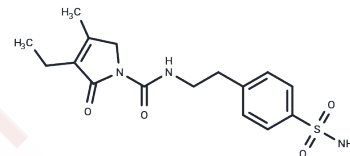


## Glimepiride sulfonamide

## Chemical Properties

CAS No. :	119018-29-0
Formula:	C <sub>16</sub> H <sub>21</sub> N <sub>3</sub> O <sub>4</sub> S
Molecular Weight:	351.42
Storage:	Powder: -20°C for 3 years   In solvent: -80°C for 1 year Actual storage temperature shall be subject to the COA.



## Biological Description

Description	Glimepiride sulfonamide is an antiinflammatory agent.
Targets(IC50)	Others, Immunology/Inflammation related

## Solubility Information

Solubility	DMSO: 45 mg/mL (128.05 mM), Sonication is recommended. (< 1 mg/ml refers to the product slightly soluble or insoluble)
In vivo Formulation	10% DMSO+40% PEG300+5% Tween-80+45% Saline: 2 mg/mL (5.69 mM), Sonication is recommended. <i>Please add the solvents sequentially, clarifying the solution as much as possible before adding the next one. Dissolve by heating and/or sonication if necessary. Working solution is recommended to be prepared and used immediately. The formulation provided above is for reference purposes only. In vivo formulations may vary and should be modified based on specific experimental conditions.</i>

## Preparing Stock Solutions

	1mg	5mg	10mg
1 mM	2.8456 mL	14.228 mL	28.456 mL
5 mM	0.5691 mL	2.8456 mL	5.6912 mL
10 mM	0.2846 mL	1.4228 mL	2.8456 mL
50 mM	0.0569 mL	0.2846 mL	0.5691 mL

Please select the appropriate solvent to prepare the stock solution, according to the solubility of the product in different solvents. Please use it as soon as possible.

Note: The dilution table applies only to solid products. For liquid products, please calculate the stock solution based on the stated concentration and/or density.

Reference

Hill JR, et al. Sulfonylureas as Concomitant Insulin Secretagogues and NLRP3 Inflammasome Inhibitors. ChemMedChem. 2017 Sep 7;12(17):1449-1457.

**Inhibitor · Natural Compounds · Compound Libraries · Recombinant Proteins**

This product is for Research Use Only · Not for Human or Veterinary or Therapeutic Use

Tel:781-999-4286 E\_mail:info@targetmol.com Address:34 Washington Street,Wellesley Hills,MA 02481