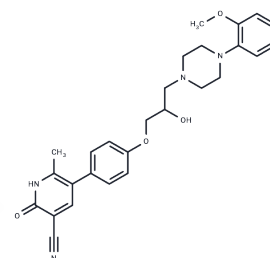


## Saterinone

## Chemical Properties

CAS No. : 102669-89-6  
 Formula: C<sub>27</sub>H<sub>30</sub>N<sub>4</sub>O<sub>4</sub>  
 Molecular Weight: 474.55  
 Storage: Powder: -20°C for 3 years | In solvent: -80°C for 1 year  
 Actual storage temperature shall be subject to the COA.



## Biological Description

Description	Saterinone is a potent and selective phosphodiesterase III inhibitor and a potent antagonist of the vascular $\alpha$ -1-adrenoceptor. Saterinone has vasodilatory properties and can be used in the acute treatment of chronic heart failure. Saterinone inhibited crude cAMP phosphodiesterase (PDE) activity in guinea pig right ventricular homogenates. The $ic_{50}$ value is $2.3 \times 10^{-5}$ mol/L.
Targets(IC <sub>50</sub> )	Adrenergic Receptor, PDE
In vitro	Saterinone selectively and potently inhibited the isoenzyme III of PDE ( $IC_{50} = 0.06$ $\mu$ mol/l). Thus, saterinone proved to be a selective inhibitor of 'low-K <sub>m</sub> , cAMP specific' PDE III.[1]
In vivo	Saterinone (1-30 $\mu$ mol/l) exerted a concentration-dependent positive inotropic effect ( $EC_{50} = 9.1$ $\mu$ mol/l) in guinea pig papillary muscles.[1]

## Solubility Information

Solubility	DMSO: 4.75 mg/mL (10.01 mM), Sonication is recommended. ( $< 1$ mg/ml refers to the product slightly soluble or insoluble)
------------	---

### Preparing Stock Solutions

---

	1mg	5mg	10mg
1 mM	2.1073 mL	10.5363 mL	21.0726 mL
5 mM	0.4215 mL	2.1073 mL	4.2145 mL
10 mM	0.2107 mL	1.0536 mL	2.1073 mL
50 mM	0.0421 mL	0.2107 mL	0.4215 mL

---

Please select the appropriate solvent to prepare the stock solution, according to the solubility of the product in different solvents. Please use it as soon as possible.

Note: The dilution table applies only to solid products. For liquid products, please calculate the stock solution based on the stated concentration and/or density.

### Reference

Brunkhorst D, et al. Selective inhibition of cAMP phosphodiesterase III activity by the cardiogenic agent saterinone in guinea pig myocardium. *Arzneimittelforschung*. 1988;38(9):1293-1298.

Kieback AG, et al. Saterinone, dobutamine, and sodium nitroprusside: comparison of cardiovascular profiles in patients with congestive heart failure. *J Cardiovasc Pharmacol*. 1998;32(4):629-636.

Iven H, et al. Electrophysiologic effects of saterinone and milrinone in the isolated guinea pig myocardium. *Arzneimittelforschung*. 1988;38(9):1298-1302.

**Inhibitor · Natural Compounds · Compound Libraries · Recombinant Proteins**

This product is for Research Use Only · Not for Human or Veterinary or Therapeutic Use

Tel:781-999-4286 E\_mail:info@targetmol.com Address:34 Washington Street,Wellesley Hills,MA 02481