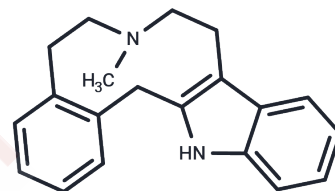


LE 300

Chemical Properties

CAS No. : 274694-98-3
 Formula: C₂₀H₂₂N₂
 Molecular Weight: 290.4
 Storage: Powder: -20°C for 3 years | In solvent: -80°C for 1 year
 Actual storage temperature shall be subject to the COA.



Biological Description

Description	LE 300 represents a structurally novel type of antagonists acting preferentially at the dopamine D(1)/D(5)receptors and the serotonin 5-HT(2A)receptor.
Targets(IC50)	5-HT Receptor,Dopamine Receptor
In vitro	The Kis of LE 300 are 1.9 nM and 7.5 nM in CHO cell membranes expressing human dopamine D1 and D5 receptors, respectively. In a rat tail artery experiment, the pA2 value of LE 300 at the 5-HT2A receptor was 8.32[2].

Solubility Information

Solubility	DMSO: <30 mg/mL (103.30 mM),Sonication is recommended. (< 1 mg/ml refers to the product slightly soluble or insoluble)
------------	---

Preparing Stock Solutions

	1mg	5mg	10mg
1 mM	3.4435 mL	17.2176 mL	34.4353 mL
5 mM	0.6887 mL	3.4435 mL	6.8871 mL
10 mM	0.3444 mL	1.7218 mL	3.4435 mL
50 mM	0.0689 mL	0.3444 mL	0.6887 mL

Please select the appropriate solvent to prepare the stock solution, according to the solubility of the product in different solvents. Please use it as soon as possible.

Note: The dilution table applies only to solid products. For liquid products, please calculate the stock solution based on the stated concentration and/or density.

Reference

- Rostom SA. Novel fused pyrrole heterocyclic ring systems as structure analogs of LE 300: Synthesis and pharmacological evaluation as serotonin 5-HT(2A), dopamine and histamine H(1) receptor ligands. Arch Pharm (Weinheim). 2010 Feb;343(2):73-80.
- Kassack MU, et al. Pharmacological characterization of the benz[d]indolo[2,3-g]azecine LE300, a novel type of a nanomolar dopamine receptor antagonist. Naunyn Schmiedebergs Arch Pharmacol. 2002 Dec;366(6):543-50.
- Hefnawy M, et al. Spectrofluorimetric determination of dopamine receptor antagonist LE 300 in mice plasma. Luminescence. 2016 Feb;31(1):63-6.

Inhibitor · Natural Compounds · Compound Libraries · Recombinant Proteins

This product is for Research Use Only · Not for Human or Veterinary or Therapeutic Use

Tel:781-999-4286 E_mail:info@targetmol.com Address:34 Washington Street,Wellesley Hills,MA 02481