

Cyclopentiazide

Chemical Properties

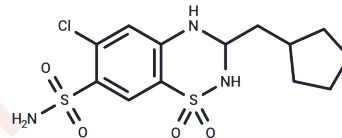
CAS No. : 742-20-1

Formula: C₁₃H₁₈ClN₃O₄S₂

Molecular Weight: 379.88

Storage: Powder: -20°C for 3 years | In solvent: -80°C for 1 year

Actual storage temperature shall be subject to the COA.



Biological Description

Description	Cyclopentiazide (Cyclomethiazide) is a thiazide diuretic used to treat hypertension and heart failure. It decreases the excretion of calcium ions and uric acid and increases the excretion of sodium and potassium ions.
Targets(IC50)	Others
In vivo	Cyclopentiazide 125 micrograms, a dose lower than is currently marketed, produced a similar hypotensive response to 500 micrograms of the drug without upsetting the biochemical profile[3].

Solubility Information

Solubility	DMSO: 45 mg/mL (118.46 mM),Sonication is recommended. H ₂ O: Insoluble, (< 1 mg/ml refers to the product slightly soluble or insoluble)
------------	---

Preparing Stock Solutions

	1mg	5mg	10mg
1 mM	2.6324 mL	13.1621 mL	26.3241 mL
5 mM	0.5265 mL	2.6324 mL	5.2648 mL
10 mM	0.2632 mL	1.3162 mL	2.6324 mL
50 mM	0.0526 mL	0.2632 mL	0.5265 mL

Please select the appropriate solvent to prepare the stock solution, according to the solubility of the product in different solvents. Please use it as soon as possible.

Note: The dilution table applies only to solid products. For liquid products, please calculate the stock solution based on the stated concentration and/or density.

Reference

Krum H, Jackson B, Conway EL, Howes LG, Johnston CI, Louis WJ. Steady-state pharmacokinetics and pharmacodynamics of cilazapril in the presence and absence of cyclopentiazide. *J Cardiovasc Pharmacol.* 1992 Sep;20(3):451-7. PubMed PMID: 1279292.

Passmore AP, Whitehead EM, Crawford V, McVeigh GE, Johnston GD. The antihypertensive and metabolic effects of low and conventional dose cyclopentiazide in type II diabetics with hypertension. *Q J Med.* 1991 Nov;81(295):919-28. PubMed PMID: 1808632.

Mcveigh G E , Galloway D B , Johnston D . The case for low dose diuretics in hypertension: Comparison of low and conventional doses of cyclopentiazide[J]. *BMJ Clinical Research*, 1988, 297(6641):95-98.

Allman S, Norris RJ. An open, parallel group study comparing a frusemide/amiloride diuretic and a diuretic containing cyclopentiazide with sustained release potassium in the treatment of congestive cardiac failure--a multicentre general practice study. *J Int Med Res.* 1990;18 Suppl 2:17B-23B. PubMed PMID: 2193840.

Inhibitor · Natural Compounds · Compound Libraries · Recombinant Proteins

This product is for Research Use Only · Not for Human or Veterinary or Therapeutic Use

Tel:781-999-4286 E_mail:info@targetmol.com Address:34 Washington Street,Wellesley Hills,MA 02481