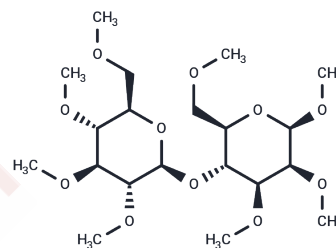


## Methyl cellulose

## Chemical Properties

CAS No. :	9004-67-5
Formula:	C <sub>20</sub> H <sub>38</sub> O <sub>11</sub>
Molecular Weight:	454.513
Storage:	Powder: -20°C for 3 years   In solvent: -80°C for 1 year Actual storage temperature shall be subject to the COA.



## Biological Description

Description	Methylcellulose, a natural polymer, is non-toxic and forms gels upon heating.
Targets(IC50)	Others

## Solubility Information

Solubility	H <sub>2</sub> O: 5.00 mg/mL (11.00 mM), Sonication is recommended. DMSO: 4.55 mg/mL (10.01 mM), Sonication is recommended. ( $< 1$ mg/ml refers to the product slightly soluble or insoluble)
------------	--

## Preparing Stock Solutions

	1mg	5mg	10mg
1 mM	2.2002 mL	11.0009 mL	22.0017 mL
5 mM	0.440 mL	2.2002 mL	4.4003 mL
10 mM	0.220 mL	1.1001 mL	2.2002 mL
50 mM	0.044 mL	0.220 mL	0.440 mL

Please select the appropriate solvent to prepare the stock solution, according to the solubility of the product in different solvents. Please use it as soon as possible.

Note: The dilution table applies only to solid products. For liquid products, please calculate the stock solution based on the stated concentration and/or density.

Inhibitor · Natural Compounds · Compound Libraries · Recombinant Proteins

This product is for Research Use Only · Not for Human or Veterinary or Therapeutic Use

Tel: 781-999-4286 E\_mail: info@targetmol.com Address: 34 Washington Street, Wellesley Hills, MA 02481