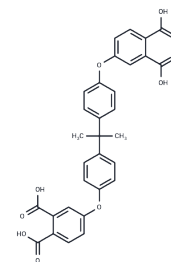


Lockdown

Chemical Properties

CAS No. :	38103-05-8
Formula:	C ₃₁ H ₂₄ O ₁₀
Molecular Weight:	556.52
Storage:	Powder: -20°C for 3 years In solvent: -80°C for 1 year Actual storage temperature shall be subject to the COA.



Biological Description

Description	Lockdown is a reversible and non-competitive PPM1F inhibitor. Lockdown is selective for PPM1F, because this compound does not inhibit other protein phosphatases in vitro and does not induce additional phenotypes in PPM1F knockout cells. Lockdown acts in a dose-dependent, allosteric manner with high selectivity for PPM1F
Targets(IC50)	Others

Preparing Stock Solutions

	1mg	5mg	10mg
1 mM	1.7969 mL	8.9844 mL	17.9688 mL
5 mM	0.3594 mL	1.7969 mL	3.5938 mL
10 mM	0.1797 mL	0.8984 mL	1.7969 mL
50 mM	0.0359 mL	0.1797 mL	0.3594 mL

Please select the appropriate solvent to prepare the stock solution, according to the solubility of the product in different solvents. Please use it as soon as possible.

Note: The dilution table applies only to solid products. For liquid products, please calculate the stock solution based on the stated concentration and/or density.

Inhibitor · Natural Compounds · Compound Libraries · Recombinant Proteins

This product is for Research Use Only · Not for Human or Veterinary or Therapeutic Use

Tel:781-999-4286 E_mail:info@targetmol.com Address:34 Washington Street,Wellesley Hills,MA 02481