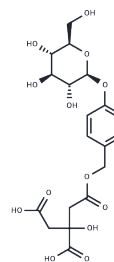


Parishin E

Chemical Properties

CAS No. :	952068-57-4
Formula:	C ₁₉ H ₂₄ O ₁₃
Molecular Weight:	460.39
Storage:	Store at low temperature,Keep away from direct sunlight Powder: -20°C for 3 years In solvent: -80°C for 1 year <i>Actual storage temperature shall be subject to the COA.</i>



Biological Description

Description	Parishin E is a natural product from Gastrodia elata,have antioxidant property.
Targets(IC50)	Others

Solubility Information

Solubility	DMSO: 140 mg/mL (304.09 mM),Sonication is recommended. (< 1 mg/ml refers to the product slightly soluble or insoluble)
In vivo Formulation	10% DMSO+40% PEG300+5% Tween 80+45% Saline: 2 mg/mL (4.34 mM),Sonication is recommended. 10% DMSO+90% Saline: 10 mg/mL (21.72 mM),Solution. <i>Please add the solvents sequentially, clarifying the solution as much as possible before adding the next one. Dissolve by heating and/or sonication if necessary. Working solution is recommended to be prepared and used immediately. The formulation provided above is for reference purposes only. In vivo formulations may vary and should be modified based on specific experimental conditions.</i>

Preparing Stock Solutions

	1mg	5mg	10mg
1 mM	2.1721 mL	10.8604 mL	21.7207 mL
5 mM	0.4344 mL	2.1721 mL	4.3441 mL
10 mM	0.2172 mL	1.086 mL	2.1721 mL
50 mM	0.0434 mL	0.2172 mL	0.4344 mL

Please select the appropriate solvent to prepare the stock solution, according to the solubility of the product in different solvents. Please use it as soon as possible.

Note: The dilution table applies only to solid products. For liquid products, please calculate the stock solution based on the stated concentration and/or density.

Inhibitor · Natural Compounds · Compound Libraries · Recombinant Proteins

This product is for Research Use Only · Not for Human or Veterinary or Therapeutic Use

Tel:781-999-4286 E_mail:info@targetmol.com Address:34 Washington Street,Wellesley Hills,MA 02481