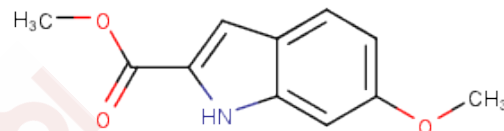


## Methyl 6-methoxy-1H-indole-2-carboxylate

## Chemical Properties

CAS No. :	98081-83-5
Formula:	C <sub>11</sub> H <sub>11</sub> NO <sub>3</sub>
Molecular Weight:	205.213
Storage:	Powder: -20°C for 3 years   In solvent: -80°C for 1 year Actual storage temperature shall be subject to the COA.



## Biological Description

Description	Methyl 6-methoxy-1H-indole-2-carboxylate, with CAS No. 98081-83-5, is a fragment molecule that serves as an important scaffold for molecular linking, expansion, and modification. Methyl 6-methoxy-1H-indole-2-carboxylate provides a structural basis and research tool for the design and screening of novel drug candidates, and is commonly used in drug discovery, drug synthesis, and related research.
-------------	--

## Preparing Stock Solutions

	1mg	5mg	10mg
1 mM	4.8731 mL	24.3653 mL	48.7306 mL
5 mM	0.9746 mL	4.8731 mL	9.7461 mL
10 mM	0.4873 mL	2.4365 mL	4.8731 mL
50 mM	0.0975 mL	0.4873 mL	0.9746 mL

Please select the appropriate solvent to prepare the stock solution, according to the solubility of the product in different solvents. Please use it as soon as possible.

Note: The dilution table applies only to solid products. For liquid products, please calculate the stock solution based on the stated concentration and/or density.

**Inhibitor · Natural Compounds · Compound Libraries · Recombinant Proteins**

This product is for Research Use Only · Not for Human or Veterinary or Therapeutic Use

Tel: 781-999-4286 E\_mail: info@targetmol.com Address: 34 Washington Street, Wellesley Hills, MA 02481