

## Arborine

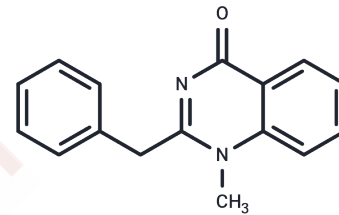
## Chemical Properties

CAS No. : 6873-15-0

Formula: C<sub>16</sub>H<sub>14</sub>N<sub>2</sub>O

Molecular Weight: 250.3

Storage: Store at low temperature, Keep away from direct sunlight  
 Powder: -20°C for 3 years | In solvent: -80°C for 1 year  
 Actual storage temperature shall be subject to the COA.



## Biological Description

Description	Arborine (Arborin) is a larval growth inhibitor from glycoslnis pentaphylla.
Targets(IC50)	AChR

## Solubility Information

Solubility	DMSO: 9 mg/mL (35.96 mM), Sonication is recommended. (< 1 mg/ml refers to the product slightly soluble or insoluble)
In vivo Formulation	10% DMSO+40% PEG300+5% Tween 80+45% Saline: 1 mg/mL (4 mM), Sonication is recommended. <i>Please add the solvents sequentially, clarifying the solution as much as possible before adding the next one. Dissolve by heating and/or sonication if necessary. Working solution is recommended to be prepared and used immediately. The formulation provided above is for reference purposes only. In vivo formulations may vary and should be modified based on specific experimental conditions.</i>

## Preparing Stock Solutions

	1mg	5mg	10mg
1 mM	3.9952 mL	19.976 mL	39.9521 mL
5 mM	0.799 mL	3.9952 mL	7.9904 mL
10 mM	0.3995 mL	1.9976 mL	3.9952 mL
50 mM	0.0799 mL	0.3995 mL	0.799 mL

Please select the appropriate solvent to prepare the stock solution, according to the solubility of the product in different solvents. Please use it as soon as possible.

Note: The dilution table applies only to solid products. For liquid products, please calculate the stock solution based on the stated concentration and/or density.

Reference

Ahmad, Farediah, Mohd Ismail, Hazar, Rahmani, Mawardi. Arborine, a Larval Growth Inhibitor from *Glycoslnis pentaphylla*[j]. 1994.

**Inhibitor · Natural Compounds · Compound Libraries · Recombinant Proteins**

This product is for Research Use Only · Not for Human or Veterinary or Therapeutic Use

Tel:781-999-4286 E\_mail:info@targetmol.com Address:34 Washington Street,Wellesley Hills,MA 02481