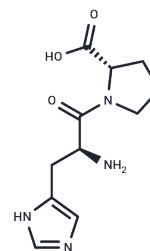


## His-Pro

## Chemical Properties

|                   |   |
|-------------------|---|
| CAS No. :         | 20930-58-9  |
| Formula:          | C11H16N4O3  |
| Molecular Weight: | 252.27  |
| Storage:          | Keep away from moisture<br>Powder: -20°C for 3 years   In solvent: -80°C for 1 year<br><small>Actual storage temperature shall be subject to the COA.</small> |



## Biological Description

|               |   |
|---------------|---|
| Description   | His-Pro is a dipeptide comprising histidyl and proline. |
| Targets(IC50) | Nrf2  |

## Preparing Stock Solutions

|       | 1mg       | 5mg       | 10mg       |
|-------|-----------|-----------|------------|
| 1 mM  | 3.964 mL  | 19.820 mL | 39.6401 mL |
| 5 mM  | 0.7928 mL | 3.964 mL  | 7.928 mL   |
| 10 mM | 0.3964 mL | 1.982 mL  | 3.964 mL   |
| 50 mM | 0.0793 mL | 0.3964 mL | 0.7928 mL  |

Please select the appropriate solvent to prepare the stock solution, according to the solubility of the product in different solvents. Please use it as soon as possible.

Note: The dilution table applies only to solid products. For liquid products, please calculate the stock solution based on the stated concentration and/or density.

## Reference

Park SW, et al. Alterations in pancreatic protein expression in STZ-induced diabetic rats and genetically diabetic mice in response to treatment with hypoglycemic dipeptide Cyclo (His-Pro). Cell Physiol Biochem. 2012;29(3-4): 603-16.

**Inhibitor · Natural Compounds · Compound Libraries · Recombinant Proteins**

This product is for Research Use Only · Not for Human or Veterinary or Therapeutic Use

Tel:781-999-4286 E\_mail:info@targetmol.com Address:34 Washington Street,Wellesley Hills,MA 02481