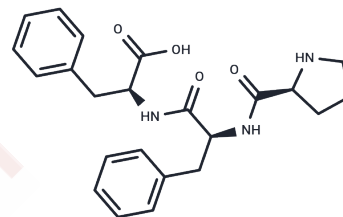


Pro-Phe-Phe

Chemical Properties

CAS No. :	164257-32-3
Formula:	C ₂₃ H ₂₇ N ₃ O ₄
Molecular Weight:	409.486
Storage:	Keep away from moisture Powder: -20°C for 3 years In solvent: -80°C for 1 year <small>Actual storage temperature shall be subject to the COA.</small>



Biological Description

Description	Pro-Phe-Phe, a highly aggregation-prone tripeptide composed of natural amino acids, exhibits the formation of distinctive helical-like sheets that engage in aromatic dry interfaces. This property makes Pro-Phe-Phe an excellent candidate for the development of modular super-helical self-assembling nanostructures.
-------------	---

Preparing Stock Solutions

	1mg	5mg	10mg
1 mM	2.4421 mL	12.2103 mL	24.4206 mL
5 mM	0.4884 mL	2.4421 mL	4.8841 mL
10 mM	0.2442 mL	1.221 mL	2.4421 mL
50 mM	0.0488 mL	0.2442 mL	0.4884 mL

Please select the appropriate solvent to prepare the stock solution, according to the solubility of the product in different solvents. Please use it as soon as possible.

Note: The dilution table applies only to solid products. For liquid products, please calculate the stock solution based on the stated concentration and/or density.

Reference

Bera S, et, al. Rigid helical-like assemblies from a self-aggregating tripeptide. Nat Mater. 2019 May;18(5):503-509.

Inhibitor · Natural Compounds · Compound Libraries · Recombinant Proteins

This product is for Research Use Only · Not for Human or Veterinary or Therapeutic Use

Tel:781-999-4286 E_mail:info@targetmol.com Address:34 Washington Street,Wellesley Hills,MA 02481