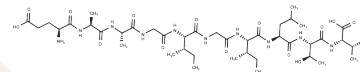


## MART-1 (26-35) (human)

## Chemical Properties

CAS No. :	156251-01-3
Formula:	C42H74N10O14
Molecular Weight:	943.1
Storage:	Keep away from moisture Powder: -20°C for 3 years   In solvent: -80°C for 1 year <small>Actual storage temperature shall be subject to the COA.</small>



## Biological Description

Description	MART-1 (26-35) (human) [MART-1 (26-35) human] is a peptide fragment of the MART-1 protein.
Targets(IC50)	Others

## Solubility Information

Solubility	DMSO: 10 mM, Sonication is recommended. ( $< 1$ mg/ml refers to the product slightly soluble or insoluble)
------------	---

## Preparing Stock Solutions

	1mg	5mg	10mg
1 mM	1.0603 mL	5.3017 mL	10.6033 mL
5 mM	0.2121 mL	1.0603 mL	2.1207 mL
10 mM	0.106 mL	0.5302 mL	1.0603 mL
50 mM	0.0212 mL	0.106 mL	0.2121 mL

Please select the appropriate solvent to prepare the stock solution, according to the solubility of the product in different solvents. Please use it as soon as possible.

Note: The dilution table applies only to solid products. For liquid products, please calculate the stock solution based on the stated concentration and/or density.

## Reference

Borbulevych O Y , Insaiddo F K , Baxter T K , et al. Structures of MART-126/27-35 Peptide/HLA-A2 Complexes Reveal a Remarkable Disconnect between Antigen Structural Homology and T Cell Recognition[J]. Journal of Molecular Biology, 2007, 372(5):0-1136.

Coulie PG, et al. A new gene coding for a differentiation antigen recognized by autologous cytolytic T lymphocytes on HLA-A2 melanomas. J Exp Med. 1994 Jul 1;180(1):35-42.

**Inhibitor · Natural Compounds · Compound Libraries · Recombinant Proteins**

This product is for Research Use Only · Not for Human or Veterinary or Therapeutic Use

Tel:781-999-4286 E\_mail:info@targetmol.com Address:34 Washington Street,Wellesley Hills,MA 02481