

PFE-360

Chemical Properties

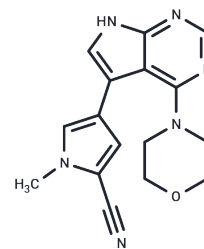
CAS No. : 1527475-61-1

Formula: C₁₆H₁₆N₆O

Molecular Weight: 308.34

Storage: Powder: -20°C for 3 years | In solvent: -80°C for 1 year

Actual storage temperature shall be subject to the COA.



Biological Description

Description	PFE-360 (PF-06685360) is a potent and selective inhibitor of LRRK2 kinase, with an in vivo IC ₅₀ of 2.3 nM.
Targets(IC ₅₀)	LRRK2
In vivo	PFE-360 (4 mg/kg and 7.5 mg/kg, orally, BID, 10-12 weeks) treatment effectively reduces the LRRK2-pSer935/total LRRK2 ratio. It has no significant adverse effects[1].

Solubility Information

Solubility	DMSO: 3.09 mg/mL (10.02 mM), Sonication is recommended. (< 1 mg/ml refers to the product slightly soluble or insoluble)
In vivo Formulation	10% DMSO+40% PEG300+5% Tween 80+45% Saline: 1 mg/mL (3.24 mM), Sonication is recommended. <i>Please add the solvents sequentially, clarifying the solution as much as possible before adding the next one. Dissolve by heating and/or sonication if necessary. Working solution is recommended to be prepared and used immediately. The formulation provided above is for reference purposes only. In vivo formulations may vary and should be modified based on specific experimental conditions.</i>

Preparing Stock Solutions

	1mg	5mg	10mg
1 mM	3.2432 mL	16.2159 mL	32.4317 mL
5 mM	0.6486 mL	3.2432 mL	6.4863 mL
10 mM	0.3243 mL	1.6216 mL	3.2432 mL
50 mM	0.0649 mL	0.3243 mL	0.6486 mL

Please select the appropriate solvent to prepare the stock solution, according to the solubility of the product in different solvents. Please use it as soon as possible.

Note: The dilution table applies only to solid products. For liquid products, please calculate the stock solution based on the stated concentration and/or density.

Reference

Marco A.S. Baptista, et al. LRRK2 Kinase Inhibitors of Different Structural Classes Induce Abnormal Accumulation of Lamellar Bodies in Type II Pneumocytes in Non-Human Primates but are Reversible and Without Pulmonary Functional Consequences.

Andersen MA, et al. Parkinson's disease-like burst firing activity in subthalamic nucleus induced by AAV- α -synuclein is normalized by LRRK2 modulation. *Neurobiol Dis.* 2018 Aug;116:13-27.

Andersen MA, et al. PFE-360-induced LRRK2 inhibition induces reversible, non-adverse renal changes in rats. *Toxicology.* 2018 Feb 15;395:15-22.

Inhibitor · Natural Compounds · Compound Libraries · Recombinant Proteins

This product is for Research Use Only · Not for Human or Veterinary or Therapeutic Use

Tel:781-999-4286 E_mail:info@targetmol.com Address:34 Washington Street,Wellesley Hills,MA 02481