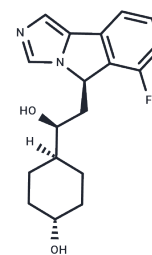


## IDO-IN-8

## Chemical Properties

|                   |   |
|-------------------|---|
| CAS No. :         | 1402837-77-7  |
| Formula:          | C <sub>18</sub> H <sub>21</sub> FN <sub>2</sub> O <sub>2</sub>  |
| Molecular Weight: | 316.37  |
| Storage:          | Powder: -20°C for 3 years   In solvent: -80°C for 1 year<br>Actual storage temperature shall be subject to the COA. |



## Biological Description

|                            |   |
|----------------------------|---|
| Description                | IDO-IN-8 is an indoleamine 2,3-dioxygenase (IDO) inhibitor (IC <sub>50</sub> : 1-10 μM).  |
| Targets(IC <sub>50</sub> ) | IDO, Indoleamine 2,3-Dioxygenase (IDO)  |
| In vitro                   | IDO-IN-8 is an indoleamine 2,3-dioxygenase (IDO) inhibitor with an IC <sub>50</sub> of 1-10 μM (this is the concentration of IDO-IN-8 at which inhibits 50% of enzymatic activity using recombinant human IDO). |

## Solubility Information

|            |   |
|------------|---|
| Solubility | Ethanol: 100 mg/mL (316.09 mM), Sonication is recommended.<br>(< 1 mg/ml refers to the product slightly soluble or insoluble) |
|------------|---|

## Preparing Stock Solutions

|       | 1mg       | 5mg        | 10mg       |
|-------|-----------|------------|------------|
| 1 mM  | 3.1609 mL | 15.8043 mL | 31.6086 mL |
| 5 mM  | 0.6322 mL | 3.1609 mL  | 6.3217 mL  |
| 10 mM | 0.3161 mL | 1.5804 mL  | 3.1609 mL  |
| 50 mM | 0.0632 mL | 0.3161 mL  | 0.6322 mL  |

Please select the appropriate solvent to prepare the stock solution, according to the solubility of the product in different solvents. Please use it as soon as possible.

Note: The dilution table applies only to solid products. For liquid products, please calculate the stock solution based on the stated concentration and/or density.

## Reference

Mautino, et al. Preparation of fused imidazole derivatives as IDO inhibitors. From PCT Int. Appl. (2012), 20121018.

**Inhibitor · Natural Compounds · Compound Libraries · Recombinant Proteins**

This product is for Research Use Only · Not for Human or Veterinary or Therapeutic Use

Tel:781-999-4286 E\_mail:info@targetmol.com Address:34 Washington Street,Wellesley Hills,MA 02481