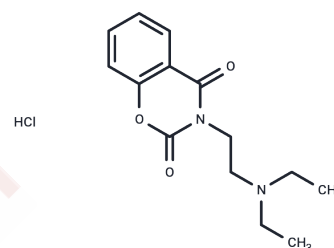


## Letimide HCl

## Chemical Properties

CAS No. :	21791-39-9
Formula:	C <sub>14</sub> H <sub>19</sub> ClN <sub>2</sub> O <sub>3</sub>
Molecular Weight:	298.77
Storage:	Powder: -20°C for 3 years   In solvent: -80°C for 1 year Actual storage temperature shall be subject to the COA.



## Biological Description

Description	Letimide HCl is an analgesic agent.
Targets(IC50)	Others,Endogenous Metabolite

## Preparing Stock Solutions

	1mg	5mg	10mg
1 mM	3.3471 mL	16.7353 mL	33.4706 mL
5 mM	0.6694 mL	3.3471 mL	6.6941 mL
10 mM	0.3347 mL	1.6735 mL	3.3471 mL
50 mM	0.0669 mL	0.3347 mL	0.6694 mL

Please select the appropriate solvent to prepare the stock solution, according to the solubility of the product in different solvents. Please use it as soon as possible.

Note: The dilution table applies only to solid products. For liquid products, please calculate the stock solution based on the stated concentration and/or density.

## Reference

Díaz Barriga-Arceo S, Madrigal-Bujaidar E, Salazar M, Chamorro G. Cytogenetic and teratogenic evaluation of letimide. *Toxicol Lett.* 1991 Apr;56(1-2):99-107. PubMed PMID: 2017790.

Díaz Barriga-Arceo S, Madrigal-Bujaidar E. Genotoxic evaluation of letimide with the mouse bone marrow micronucleus test. *Toxicol Lett.* 1991 Apr;56(1-2):95-8. PubMed PMID: 2017789.

Etienne MC, Oster W, Milano G. Development and validation of a chiral high-performance liquid chromatography assay for rogletimide and rogletimide-N-oxide isomers in plasma. *Cancer Chemother Pharmacol.* 1996;38(4):343-8. PubMed PMID: 8674157.

**Inhibitor · Natural Compounds · Compound Libraries · Recombinant Proteins**

This product is for Research Use Only · Not for Human or Veterinary or Therapeutic Use

Tel:781-999-4286 E\_mail:info@targetmol.com Address:34 Washington Street,Wellesley Hills,MA 02481