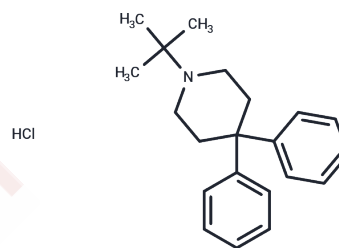


Budipine Hydrochloride

Chemical Properties

CAS No. :	63661-61-0
Formula:	C ₂₁ H ₂₈ ClN
Molecular Weight:	329.91
Storage:	Powder: -20°C for 3 years In solvent: -80°C for 1 year <i>Actual storage temperature shall be subject to the COA.</i>



Biological Description

Description	Budipine is a non-dopaminergic antiparkinsonian drug. The primary action of budipine is an indirect dopaminergic effect as shown by facilitation of dopamine (DA) release, inhibition of monoamine oxidase type B (MAO-B) and of DA (re) up-take and stimulation of aromatic L-amino acid decarboxylase (AADC).
Targets(IC50)	Others,iGluR

Preparing Stock Solutions

	1mg	5mg	10mg
1 mM	3.0311 mL	15.1556 mL	30.3113 mL
5 mM	0.6062 mL	3.0311 mL	6.0623 mL
10 mM	0.3031 mL	1.5156 mL	3.0311 mL
50 mM	0.0606 mL	0.3031 mL	0.6062 mL

Please select the appropriate solvent to prepare the stock solution, according to the solubility of the product in different solvents. Please use it as soon as possible.

Note: The dilution table applies only to solid products. For liquid products, please calculate the stock solution based on the stated concentration and/or density.

Reference

- Reichmann H. Budipine in Parkinson's tremor. J Neurol Sci. 2006 Oct 25;248(1-2):53-5. Review. PubMed PMID: 16784759.
- Owen JC, Whitton PS. Effects of amantadine and budipine on antidepressant drug-evoked changes in extracellular dopamine in the frontal cortex of freely moving rats. Brain Res. 2006 Oct 30;1117(1):206-12. PubMed PMID: 16996043.
- Müller T, Kuhn W, Przuntek H. Efficacy of budipine and placebo in untreated patients with Parkinson's disease. J Neural Transm (Vienna). 2005 Aug;112(8):1015-23. PubMed PMID: 15583956.
- Fisher A, Wang X, Cock HR, Thom M, Patsalos PN, Walker MC. Synergism between topiramate and budipine in refractory status epilepticus in the rat. Epilepsia. 2004 Nov;45(11):1300-7. PubMed PMID: 15509230.

Inhibitor · Natural Compounds · Compound Libraries · Recombinant Proteins

This product is for Research Use Only · Not for Human or Veterinary or Therapeutic Use

Tel:781-999-4286 E_mail:info@targetmol.com Address:34 Washington Street,Wellesley Hills,MA 02481