

Lamin fragment

Chemical Properties

CAS No. :

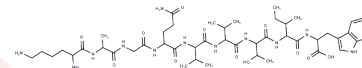
Formula: C47H76N12O12

Molecular Weight: 1001.18

Keep away from moisture

Storage: Powder: -20°C for 3 years | In solvent: -80°C for 1 year

Actual storage temperature shall be subject to the COA.



Biological Description

Description	Lamin fragment has a peptide sequence of Lys-Ala-Gly-Gln-Val-Val-Thr-Ile-Trp. Lamin polypeptides have an almost complete α -helical conformation with multiple α -helical domains separated by non- α -helical linkers that are highly conserved in length and amino acid sequence. Nuclear lamins are intermediate filament-type proteins that are the major building blocks of the nuclear lamina, a fibrous proteinaceous meshwork underlying the inner nuclear membrane. Lamins can also be localized in the nuclear interior, in a diffuse or spotted pattern. Lamins also play roles in DNA replication, chromatin organization, the spatial arrangement of nuclear pore complexes, nuclear growth, and anchorage of nuclear envelope proteins.
Targets(IC50)	Others

Solubility Information

Solubility	DMSO: ≥ 100.1 mg/mL, Sonication is recommended. (< 1 mg/ml refers to the product slightly soluble or insoluble)
------------	--

Preparing Stock Solutions

	1mg	5mg	10mg
1 mM	0.9988 mL	4.9941 mL	9.9882 mL
5 mM	0.1998 mL	0.9988 mL	1.9976 mL
10 mM	0.0999 mL	0.4994 mL	0.9988 mL
50 mM	0.020 mL	0.0999 mL	0.1998 mL

Please select the appropriate solvent to prepare the stock solution, according to the solubility of the product in different solvents. Please use it as soon as possible.

Note: The dilution table applies only to solid products. For liquid products, please calculate the stock solution based on the stated concentration and/or density.

Inhibitor · Natural Compounds · Compound Libraries · Recombinant Proteins

This product is for Research Use Only · Not for Human or Veterinary or Therapeutic Use

Tel:781-999-4286 E_mail:info@targetmol.com Address:34 Washington Street,Wellesley Hills,MA 02481