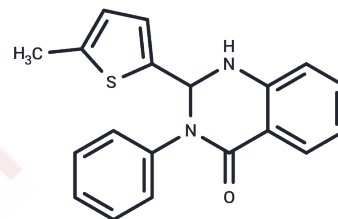


Retro-2 cycl

Chemical Properties

CAS No. :	1429192-00-6
Formula:	C ₁₉ H ₁₆ N ₂ O ₂ S
Molecular Weight:	320.41
Storage:	Powder: -20°C for 3 years In solvent: -80°C for 1 year Actual storage temperature shall be subject to the COA.



Biological Description

Description	Retro-2 cycl is an antiviral agent and a selective inhibitor of retrograde protein trafficking mediated by syntaxin-5 at the interface. Retro-2 cycl inhibits JCPyV(IC ₅₀ s: 54 μM) and HPV16 pseudovirus(IC ₅₀ s: 160 μM).
Targets(IC ₅₀)	Anti-infection, Virus Protease

Solubility Information

Solubility	H ₂ O: < 0.1 mg/mL (insoluble) DMSO: 45 mg/mL (140.45 mM), Sonication is recommended. (< 1 mg/ml refers to the product slightly soluble or insoluble)
In vivo Formulation	10% DMSO+40% PEG300+5% Tween 80+45% Saline: 2 mg/mL (6.24 mM), Sonication is recommended. <i>Please add the solvents sequentially, clarifying the solution as much as possible before adding the next one. Dissolve by heating and/or sonication if necessary. Working solution is recommended to be prepared and used immediately. The formulation provided above is for reference purposes only. In vivo formulations may vary and should be modified based on specific experimental conditions.</i>

Preparing Stock Solutions

	1mg	5mg	10mg
1 mM	3.121 mL	15.605 mL	31.210 mL
5 mM	0.6242 mL	3.121 mL	6.242 mL
10 mM	0.3121 mL	1.5605 mL	3.121 mL
50 mM	0.0624 mL	0.3121 mL	0.6242 mL

Please select the appropriate solvent to prepare the stock solution, according to the solubility of the product in different solvents. Please use it as soon as possible.

Note: The dilution table applies only to solid products. For liquid products, please calculate the stock solution based on the stated concentration and/or density.

Reference

Carney DW, et al. Structural optimization of a retrograde trafficking inhibitor that protects cells from infections by human polyoma- and papillomaviruses. *Bioorg Med Chem*. 2014 Sep 1;22(17):4836-47.

Inhibitor · Natural Compounds · Compound Libraries · Recombinant Proteins

This product is for Research Use Only · Not for Human or Veterinary or Therapeutic Use

Tel:781-999-4286 E_mail:info@targetmol.com Address:34 Washington Street,Wellesley Hills,MA 02481