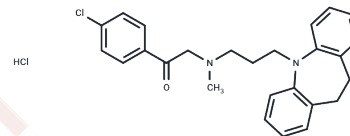


Lofepamine hydrochloride

Chemical Properties

CAS No. :	26786-32-3
Formula:	C ₂₆ H ₂₈ Cl ₂ N ₂ O
Molecular Weight:	455.42
Storage:	Powder: -20°C for 3 years In solvent: -80°C for 1 year Actual storage temperature shall be subject to the COA.



Biological Description

Description	Lofepamine is a serotonin and norepinephrine reuptake inhibitor. Lofepamine is also a psychotropic IMIPRAMINE derivative.
Targets(IC50)	Others,5-HT Receptor,Adrenergic Receptor

Preparing Stock Solutions

	1mg	5mg	10mg
1 mM	2.1958 mL	10.9789 mL	21.9578 mL
5 mM	0.4392 mL	2.1958 mL	4.3916 mL
10 mM	0.2196 mL	1.0979 mL	2.1958 mL
50 mM	0.0439 mL	0.2196 mL	0.4392 mL

Please select the appropriate solvent to prepare the stock solution, according to the solubility of the product in different solvents. Please use it as soon as possible.

Note: The dilution table applies only to solid products. For liquid products, please calculate the stock solution based on the stated concentration and/or density.

Reference

- Lancaster SG, Gonzalez JP. Lofepamine. A review of its pharmacodynamic and pharmacokinetic properties, and therapeutic efficacy in depressive illness. *Drugs*. 1989 Feb;37(2):123-40. Review. PubMed PMID: 2649353.
- Herdman JR, Cowen PJ, Campling GM, Hockney RA, Laver D, Sharpley AL. Effect of lofepramine on 5-HT function and sleep. *J Affect Disord*. 1993 Sep;29(1):63-72. PubMed PMID: 8254146.
- Feighner JP, Meridith CH, Dutt JE, Hendrickson GG. A double blind comparison of lofepramine, imipramine and placebo in patients with depression. *Acta Psychiatr Scand*. 1982 Aug;66(2):100-8. PubMed PMID: 6753500.
- Hopes H. Effects of lofepramine on human sleep: a pilot study. *Int Clin Psychopharmacol*. 1989 Oct;4(4):295-300. PubMed PMID: 2607127.

Inhibitor · Natural Compounds · Compound Libraries · Recombinant Proteins

This product is for Research Use Only · Not for Human or Veterinary or Therapeutic Use

Tel:781-999-4286 E_mail:info@targetmol.com Address:34 Washington Street,Wellesley Hills,MA 02481