

## 1-Palmitoyl Lysophosphatidic Acid (sodium salt)

## Chemical Properties

CAS No. : 17618-08-5

Formula: C19H38NaO7P

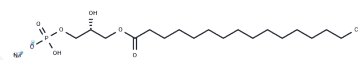
Molecular Weight: 432.46

Store at low temperature, Keep away from direct sunlight

Storage:

Powder: -20°C for 3 years | In solvent: -80°C for 1 year

Actual storage temperature shall be subject to the COA.



## Biological Description

Description	1-Palmitoyl Lysophosphatidic Acid (sodium salt) is an LPA derivative and endogenous metabolite, suitable for related research in the field of life sciences.
Targets(IC50)	Endogenous Metabolite

## Solubility Information

Solubility	Methanol: 2 mg/mL (4.62 mM), Sonication is recommended. H2O: 40 mg/mL (92.49 mM), Sonication is recommended. (< 1 mg/ml refers to the product slightly soluble or insoluble)
------------	--

## Preparing Stock Solutions

	1mg	5mg	10mg
1 mM	2.3124 mL	11.5618 mL	23.1235 mL
5 mM	0.4625 mL	2.3124 mL	4.6247 mL
10 mM	0.2312 mL	1.1562 mL	2.3124 mL
50 mM	0.0462 mL	0.2312 mL	0.4625 mL

Please select the appropriate solvent to prepare the stock solution, according to the solubility of the product in different solvents. Please use it as soon as possible.

Note: The dilution table applies only to solid products. For liquid products, please calculate the stock solution based on the stated concentration and/or density.

### Reference

Baker RR, Chang HY. Lysophosphatidic acid, alkylglycerophosphate and alkylacetyl glycerophosphate increase the neuronal nuclear acetylation of 1-acyl lysophosphatidyl choline by inhibition of lysophospholipase. Mol Cell Biochem. 1999 Aug;198(1-2):47-55.

Chalasan N, et al. Randomised clinical trial: a leucine-metformin-sildenafil combination (NS-0200) vs placebo in patients with non-alcoholic fatty liver disease. Aliment Pharmacol Ther. 2018 Jun;47(12):1639-1651.

**Inhibitor · Natural Compounds · Compound Libraries · Recombinant Proteins**

This product is for Research Use Only · Not for Human or Veterinary or Therapeutic Use

Tel:781-999-4286 E\_mail:info@targetmol.com Address:34 Washington Street,Wellesley Hills,MA 02481