

Corytuberine

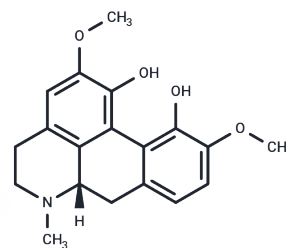
Chemical Properties

CAS No. : 517-56-6

Formula: C₁₉H₂₁NO₄

Molecular Weight: 327.37

Storage: Store at low temperature, Keep away from direct sunlight
 Powder: -20°C for 3 years | In solvent: -80°C for 1 year
 Actual storage temperature shall be subject to the COA.



Biological Description

Description	Corytuberine shows proconvulsant effects. The anti-jumping effect of Corytuberine was inhibited only by naloxone.
Targets(IC50)	Others

Preparing Stock Solutions

	1mg	5mg	10mg
1 mM	3.0546 mL	15.2732 mL	30.5465 mL
5 mM	0.6109 mL	3.0546 mL	6.1093 mL
10 mM	0.3055 mL	1.5273 mL	3.0546 mL
50 mM	0.0611 mL	0.3055 mL	0.6109 mL

Please select the appropriate solvent to prepare the stock solution, according to the solubility of the product in different solvents. Please use it as soon as possible.

Note: The dilution table applies only to solid products. For liquid products, please calculate the stock solution based on the stated concentration and/or density.

Reference

Zetler G. Neuroleptic-like, anticonvulsant and antinociceptive effects of aporphine alkaloids: bulbocapnine, corytuberine, boldine and glaucine. Arch Int Pharmacodyn Ther. 1988 Nov-Dec;296:255-81.

Inhibitor · Natural Compounds · Compound Libraries · Recombinant Proteins

This product is for Research Use Only · Not for Human or Veterinary or Therapeutic Use

Tel:781-999-4286 E_mail:info@targetmol.com Address:34 Washington Street,Wellesley Hills,MA 02481