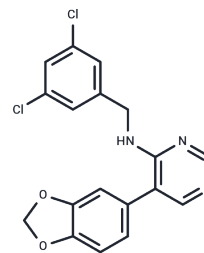


ML 315

Chemical Properties

CAS No. : 1440251-53-5
 Formula: C₁₈H₁₃Cl₂N₃O₂
 Molecular Weight: 374.22
 Storage: Powder: -20°C for 3 years | In solvent: -80°C for 1 year
Actual storage temperature shall be subject to the COA.



Biological Description

Description	ML 315 is a selective Clk and DYRK inhibitor with potential anticancer activity for the study of neurological disorders.
Targets(IC50)	CDK,DYRK

Solubility Information

Solubility	DMSO: Soluble (< 1 mg/ml refers to the product slightly soluble or insoluble)
------------	--

Preparing Stock Solutions

	1mg	5mg	10mg
1 mM	2.6722 mL	13.3611 mL	26.7222 mL
5 mM	0.5344 mL	2.6722 mL	5.3444 mL
10 mM	0.2672 mL	1.3361 mL	2.6722 mL
50 mM	0.0534 mL	0.2672 mL	0.5344 mL

Please select the appropriate solvent to prepare the stock solution, according to the solubility of the product in different solvents. Please use it as soon as possible.

Note: The dilution table applies only to solid products. For liquid products, please calculate the stock solution based on the stated concentration and/or density.

Reference

Coombs TC, et al. Small-molecule pyrimidine inhibitors of the cdc2-like (Clk) and dual specificity tyrosine phosphorylation-regulated (Dyrk) kinases: development of chemical probe ML315. *Bioorg Med Chem Lett.* 2013 Jun 15;23(12):3654-61.

Inhibitor · Natural Compounds · Compound Libraries · Recombinant Proteins

This product is for Research Use Only · Not for Human or Veterinary or Therapeutic Use

Tel:781-999-4286 E_mail:info@targetmol.com Address:34 Washington Street,Wellesley Hills,MA 02481