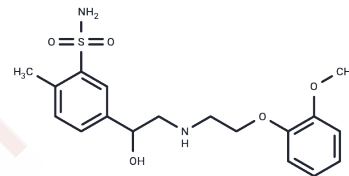


## Amosulalol

## Chemical Properties

CAS No. : 85320-68-9  
 Formula: C<sub>18</sub>H<sub>24</sub>N<sub>2</sub>O<sub>5</sub>  
 Molecular Weight: 380.46  
 Storage: Powder: -20°C for 3 years | In solvent: -80°C for 1 year  
 Actual storage temperature shall be subject to the COA.



## Biological Description

Description	Amosulalol is a combined alpha and beta adrenoceptor antagonist.
Targets(IC50)	Adrenergic Receptor

## Solubility Information

Solubility	DMSO: 45 mg/mL (118.28 mM), Sonication is recommended. (< 1 mg/ml refers to the product slightly soluble or insoluble)
------------	---

## Preparing Stock Solutions

	1mg	5mg	10mg
1 mM	2.6284 mL	13.142 mL	26.284 mL
5 mM	0.5257 mL	2.6284 mL	5.2568 mL
10 mM	0.2628 mL	1.3142 mL	2.6284 mL
50 mM	0.0526 mL	0.2628 mL	0.5257 mL

Please select the appropriate solvent to prepare the stock solution, according to the solubility of the product in different solvents. Please use it as soon as possible.

Note: The dilution table applies only to solid products. For liquid products, please calculate the stock solution based on the stated concentration and/or density.

### Reference

- Jin WL, et al. Repetitive hypoglycaemia increases serum adrenaline and induces monocyte adhesion to the endothelium in rat thoracic aorta. *Diabetologia*. 2011 Jul;54(7):1921-9.
- Suzuki K, Kamimura H. Pharmacokinetics and metabolism of an alpha,beta-blocker, amosulalol hydrochloride, in mice: biliary excretion of carbamoyl glucuronide. *Biol Pharm Bull*. 2007 Aug;30(8):1580-5.
- Gwak HS, et al. Determination of amosulalol in human plasma using solid-phase extraction combined with liquid chromatography and ultraviolet detection. *J Chromatogr B Analyt Technol Biomed Life Sci*. 2005 Apr 25;818(2):109-13.
- Ueyama T, et al. Emotional stress activates MAP kinase in the rat heart. *Life Sci*. 2001 Sep 7;69(16):1927-34.

**Inhibitor · Natural Compounds · Compound Libraries · Recombinant Proteins**

This product is for Research Use Only· Not for Human or Veterinary or Therapeutic Use

Tel:781-999-4286 E\_mail:info@targetmol.com Address:34 Washington Street,Wellesley Hills,MA 02481