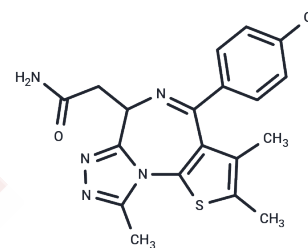


## CPI203

## Chemical Properties

CAS No. :	202591-23-9
Formula:	C <sub>19</sub> H <sub>18</sub> ClN <sub>5</sub> O <sub>2</sub> S
Molecular Weight:	399.9
Storage:	Powder: -20°C for 3 years   In solvent: -80°C for 1 year Actual storage temperature shall be subject to the COA.



## Biological Description

Description	CPI203 (CPI 203) is an effective BET bromodomain inhibitor (IC <sub>50</sub> : 37 nM for BRD4).
Targets(IC <sub>50</sub> )	Others,Epigenetic Reader Domain
In vitro	CPI203 inhibits BRD4 in vitro and in cells, while does not affect BRD4 kinase activity in vitro. [1] CPI203 exerts a cytostatic effect in all the 9 MCL cell lines analyzed with GI <sub>50</sub> ranging from 0.06 to 0.71 μM, with low cytotoxicity in normal PBMCs from healthy donors. Furthermore, lenalidomide and CPI203, by targeting IRF4 and MYC, efficiently activates the cell death program in MCL cells resistant to bortezomib. [2]
Kinase Assay	BRD4 α-screen assay: The BRD4 α-screen assay is a proximity-based assay using a tetraacetylated H4 peptide and the isolated bromodomain 1 of human BRD4. IC <sub>50</sub> values are calculated using a 10-point serial dilution of BET inhibitor.
Cell Research	MCL primary cells and cell lines are incubated as indicated with lenalidomide and/or CPI203. MTT is added for 2-6 additional hours before spectrophotometric measurement. Each measurement is made in triplicate. Values are represented using untreated control cells. The GI <sub>50</sub> is calculated as the concentration that produced 50 % growth inhibition. Combination indexes (CIs) are calculated by using the Calcsyn software version 2.0. The interaction between two drugs is considered synergistic when CI <1. (Only for Reference)

## Solubility Information

Solubility	DMSO: 200 mM,Sonication is recommended. (< 1 mg/ml refers to the product slightly soluble or insoluble)
------------	--

### Preparing Stock Solutions

---

	<b>1mg</b>	<b>5mg</b>	<b>10mg</b>
1 mM	2.5006 mL	12.5031 mL	25.0063 mL
5 mM	0.5001 mL	2.5006 mL	5.0013 mL
10 mM	0.2501 mL	1.2503 mL	2.5006 mL
50 mM	0.050 mL	0.2501 mL	0.5001 mL

---

Please select the appropriate solvent to prepare the stock solution, according to the solubility of the product in different solvents. Please use it as soon as possible.

Note: The dilution table applies only to solid products. For liquid products, please calculate the stock solution based on the stated concentration and/or density.

### Reference

Devaiah BN, et al. Proc Natl Acad Sci U S A. 2012, 109(18), 6927-6932.

Moros A, et al. Leukemia. 2014. doi: 10.1038/leu.2014.106.

**Inhibitor · Natural Compounds · Compound Libraries · Recombinant Proteins**

This product is for Research Use Only · Not for Human or Veterinary or Therapeutic Use

Tel:781-999-4286 E\_mail:info@targetmol.com Address:34 Washington Street,Wellesley Hills,MA 02481