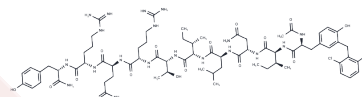


PYX 1

## Chemical Properties

CAS No. : 140842-17-7  
 Formula: C70H105Cl2N19O16  
 Molecular Weight: 1539.61  
 Storage: Keep away from moisture  
 Powder: -20°C for 3 years | In solvent: -80°C for 1 year  
 Actual storage temperature shall be subject to the COA.



## Biological Description

Description	PYX 1 is an effective orexigenic peptide.
-------------	---

## Preparing Stock Solutions

	1mg	5mg	10mg
1 mM	0.6495 mL	3.2476 mL	6.4952 mL
5 mM	0.1299 mL	0.6495 mL	1.299 mL
10 mM	0.065 mL	0.3248 mL	0.6495 mL
50 mM	0.013 mL	0.065 mL	0.1299 mL

Please select the appropriate solvent to prepare the stock solution, according to the solubility of the product in different solvents. Please use it as soon as possible.

Note: The dilution table applies only to solid products. For liquid products, please calculate the stock solution based on the stated concentration and/or density.

## Reference

Lee MC, Lawson DC, Pappas TN. Neuropeptide Y functions as a physiologic regulator of cephalic phase acid secretion. Regul Pept. 1994 Aug 4;52(3):227-34. PubMed PMID: 7800854.

Oellerich WF, Malik KU. Neuropeptide Y modulates the vascular response to periarterial nerve stimulation primarily by a postjunctional action in the isolated perfused rat kidney. J Pharmacol Exp Ther. 1993 Sep;266(3):1321-9. PubMed PMID: 8371140.

Ault DT, Radeff JM, Werling LL. Modulation of [3H]Dopamine release from rat nucleus accumbens by neuropeptide Y may involve a sigma1-like receptor. J Pharmacol Exp Ther. 1998 Feb;284(2):553-60. PubMed PMID: 9454797.

**Inhibitor · Natural Compounds · Compound Libraries · Recombinant Proteins**

This product is for Research Use Only · Not for Human or Veterinary or Therapeutic Use

Tel:781-999-4286 E\_mail:info@targetmol.com Address:34 Washington Street,Wellesley Hills,MA 02481