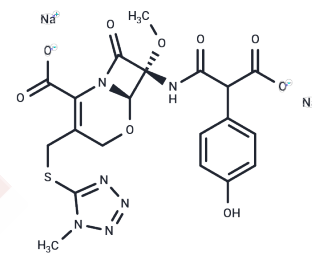


Moxalactam Disodium

Chemical Properties

CAS No. :	64953-12-4
Formula:	C ₂₀ H ₁₈ N ₆ Na ₂ O ₉ S
Molecular Weight:	564.44
Storage:	Store under nitrogen, Keep away from moisture Powder: -20°C for 3 years In solvent: -80°C for 1 year <i>Actual storage temperature shall be subject to the COA.</i>



Biological Description

Description	Moxalactam sodium salt (LY-127935) is an antibiotic compound more effective against Escherichia coli and Pseudomonas aeruginosathan cephalosporins.
Targets(IC50)	Antibacterial, Antibiotic

Solubility Information

Solubility	DMSO: 60 mg/mL (106.3 mM), Sonication is recommended. (< 1 mg/ml refers to the product slightly soluble or insoluble)
In vivo Formulation	10% DMSO+40% PEG300+5% Tween 80+45% Saline: 2 mg/mL (3.54 mM), Sonication is recommended. <i>Please add the solvents sequentially, clarifying the solution as much as possible before adding the next one. Dissolve by heating and/or sonication if necessary. Working solution is recommended to be prepared and used immediately. The formulation provided above is for reference purposes only. In vivo formulations may vary and should be modified based on specific experimental conditions.</i>

Preparing Stock Solutions

	1mg	5mg	10mg
1 mM	1.7717 mL	8.8583 mL	17.7167 mL
5 mM	0.3543 mL	1.7717 mL	3.5433 mL
10 mM	0.1772 mL	0.8858 mL	1.7717 mL
50 mM	0.0354 mL	0.1772 mL	0.3543 mL

Please select the appropriate solvent to prepare the stock solution, according to the solubility of the product in different solvents. Please use it as soon as possible.

Note: The dilution table applies only to solid products. For liquid products, please calculate the stock solution based on the stated concentration and/or density.

Reference

Carminc AA, et al. Drugs. 1983 Oct;26(4):279-333.

Inhibitor · Natural Compounds · Compound Libraries · Recombinant Proteins

This product is for Research Use Only· Not for Human or Veterinary or Therapeutic Use

Tel:781-999-4286 E_mail:info@targetmol.com Address:34 Washington Street,Wellesley Hills,MA 02481