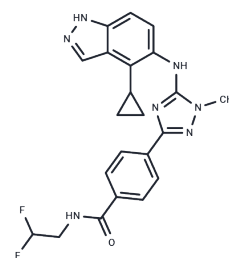


Zelasudil

Chemical Properties

CAS No. :	2365193-22-0
Formula:	C22H21F2N7O
Molecular Weight:	437.445
Storage:	Powder: -20°C for 3 years In solvent: -80°C for 1 year Actual storage temperature shall be subject to the COA.



Biological Description

Description	Zelasudil (RXC007) is a Rho-related (ROCK) kinase inhibitor for the study of idiopathic pulmonary fibrosis and inflammation.
Targets(IC50)	ROCK

Solubility Information

Solubility	DMSO: 80 mg/mL (182.88 mM), Sonification is recommended. (< 1 mg/ml refers to the product slightly soluble or insoluble)
In vivo Formulation	10% DMSO+40% PEG300+5% Tween 80+45% Saline: 3.3 mg/mL (7.54 mM), Sonication is recommended. <i>Please add the solvents sequentially, clarifying the solution as much as possible before adding the next one. Dissolve by heating and/or sonication if necessary. Working solution is recommended to be prepared and used immediately. The formulation provided above is for reference purposes only. In vivo formulations may vary and should be modified based on specific experimental conditions.</i>

Preparing Stock Solutions

	1mg	5mg	10mg
1 mM	2.286 mL	11.4299 mL	22.8598 mL
5 mM	0.4572 mL	2.286 mL	4.572 mL
10 mM	0.2286 mL	1.143 mL	2.286 mL
50 mM	0.0457 mL	0.2286 mL	0.4572 mL

Please select the appropriate solvent to prepare the stock solution, according to the solubility of the product in different solvents. Please use it as soon as possible.

Note: The dilution table applies only to solid products. For liquid products, please calculate the stock solution based on the stated concentration and/or density.

Reference

Lee E, et al. Selective ROCK2 inhibition for treatment of edema and associated conditions: World Intellectual Property Organization, WO2022169946. 2022-08-11.

Inhibitor · Natural Compounds · Compound Libraries · Recombinant Proteins

This product is for Research Use Only · Not for Human or Veterinary or Therapeutic Use

Tel:781-999-4286 E_mail:info@targetmol.com Address:34 Washington Street,Wellesley Hills,MA 02481