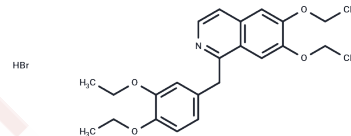


Ethaverine HBr

Chemical Properties

CAS No. :	855701-63-2
Formula:	C ₂₄ H ₃₀ BrNO ₄
Molecular Weight:	476.40
Storage:	Powder: -20°C for 3 years In solvent: -80°C for 1 year Actual storage temperature shall be subject to the COA.



Biological Description

Description	Ethaverine HBr is the parasympathetic nervous system actions inhibitor.
Targets(IC50)	Others

Preparing Stock Solutions

	1mg	5mg	10mg
1 mM	2.0991 mL	10.4954 mL	20.9908 mL
5 mM	0.4198 mL	2.0991 mL	4.1982 mL
10 mM	0.2099 mL	1.0495 mL	2.0991 mL
50 mM	0.042 mL	0.2099 mL	0.4198 mL

Please select the appropriate solvent to prepare the stock solution, according to the solubility of the product in different solvents. Please use it as soon as possible.

Note: The dilution table applies only to solid products. For liquid products, please calculate the stock solution based on the stated concentration and/or density.

Reference

- Prasad KR, Gholap SL. Stereoselective total synthesis of bioactive styryllactones (+)-goniofufurone, (+)-7-epi-goniofufurone, (+)-goniopypyrone, (+)-goniotriol, (+)-altholactone, and (-)-etharvensin. *J Org Chem.* 2008 Jan 4;73(1):2-11. Epub 2007 May 25. PubMed PMID: 17523660.
- Lee SS, Lee JJ, Cheong MJ, Kim YH, Kim Y, Yun YP, Lee CK, Lee MK. Inhibitory effects of ethaverine, a homologue of papaverine, on monoamine oxidase activity in mouse brain. *Biol Pharm Bull.* 2001 Jul;24(7):838-40. PubMed PMID: 11456127.
- Shin JS, Lee JJ, Kim Y, Lee CK, Yun YP, Lee MK. Inhibitory effects of ethaverine, a homologue of papaverine, on dopamine content in PC12 cells. *Biol Pharm Bull.* 2001 Jan;24(1):103-5. PubMed PMID: 11201237.
- Zoraghi R, Kunz S, Gong K, Seebeck T. Characterization of TbPDE2A, a novel cyclic nucleotide-specific phosphodiesterase from the protozoan parasite *Trypanosoma brucei*. *J Biol Chem.* 2001 Apr 13;276(15):11559-66. Epub 2000 Dec 27. PubMed PMID: 11134002.

Inhibitor · Natural Compounds · Compound Libraries · Recombinant Proteins

This product is for Research Use Only · Not for Human or Veterinary or Therapeutic Use

Tel:781-999-4286 E_mail:info@targetmol.com Address:34 Washington Street,Wellesley Hills,MA 02481