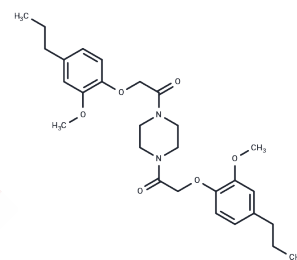


Simetride

Chemical Properties

CAS No. :	154-82-5
Formula:	C ₂₈ H ₃₈ N ₂ O ₆
Molecular Weight:	498.61
Storage:	Powder: -20°C for 3 years In solvent: -80°C for 1 year Actual storage temperature shall be subject to the COA.



Biological Description

Description	Simetride is used in the Reversal of resistance to vincristine in P388 leukemia.
Targets(IC50)	Others

Preparing Stock Solutions

	1mg	5mg	10mg
1 mM	2.0056 mL	10.0279 mL	20.0558 mL
5 mM	0.4011 mL	2.0056 mL	4.0112 mL
10 mM	0.2006 mL	1.0028 mL	2.0056 mL
50 mM	0.0401 mL	0.2006 mL	0.4011 mL

Please select the appropriate solvent to prepare the stock solution, according to the solubility of the product in different solvents. Please use it as soon as possible.

Note: The dilution table applies only to solid products. For liquid products, please calculate the stock solution based on the stated concentration and/or density.

Reference

Inaba M, Maruyama E. Reversal of resistance to vincristine in P388 leukemia by various polycyclic clinical drugs, with a special emphasis on quinacrine. Cancer Res. 1988 Apr 15;48(8):2064-7. PubMed PMID: 3349478.

Inhibitor · Natural Compounds · Compound Libraries · Recombinant Proteins

This product is for Research Use Only · Not for Human or Veterinary or Therapeutic Use

Tel:781-999-4286 E_mail:info@targetmol.com Address:34 Washington Street,Wellesley Hills,MA 02481