

SR15006

Chemical Properties

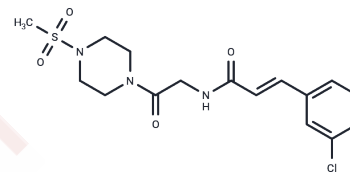
CAS No. : 2505001-54-5

Formula: C₁₆H₂₀ClN₃O₄S

Molecular Weight: 385.87

Storage: Powder: -20°C for 3 years | In solvent: -80°C for 1 year

Actual storage temperature shall be subject to the COA.



Biological Description

Description	SR15006 is Krüppel-like factor 5 (KLF5) inhibitor (IC ₅₀ = 41.6 nM).
Targets(IC ₅₀)	DNA/RNA Synthesis,KLF
In vitro	In DLD-1 CRC cells, SR15006 (1 µM or 10 µM) causes a significant reduction in the levels of tested cyclins over the course of 72 hours[1].

Solubility Information

Solubility	DMSO: 95 mg/mL (246.2 mM),Sonication is recommended. (< 1 mg/ml refers to the product slightly soluble or insoluble)
In vivo Formulation	10% DMSO+40% PEG300+5% Tween 80+45% Saline: 3.3 mg/mL (8.55 mM),Sonication is recommended. <i>Please add the solvents sequentially, clarifying the solution as much as possible before adding the next one. Dissolve by heating and/or sonication if necessary. Working solution is recommended to be prepared and used immediately. The formulation provided above is for reference purposes only. In vivo formulations may vary and should be modified based on specific experimental conditions.</i>

Preparing Stock Solutions

	1mg	5mg	10mg
1 mM	2.5915 mL	12.9577 mL	25.9155 mL
5 mM	0.5183 mL	2.5915 mL	5.1831 mL
10 mM	0.2592 mL	1.2958 mL	2.5915 mL
50 mM	0.0518 mL	0.2592 mL	0.5183 mL

Please select the appropriate solvent to prepare the stock solution, according to the solubility of the product in different solvents. Please use it as soon as possible.

Note: The dilution table applies only to solid products. For liquid products, please calculate the stock solution based on the stated concentration and/or density.

Reference

Kim J, et al. The Novel Small-Molecule SR18662 Efficiently Inhibits the Growth of Colorectal Cancer In Vitro and In Vivo. *Mol Cancer Ther.* 2019;18(11):1973-1984.

Inhibitor · Natural Compounds · Compound Libraries · Recombinant Proteins

This product is for Research Use Only · Not for Human or Veterinary or Therapeutic Use

Tel:781-999-4286 E_mail:info@targetmol.com Address:34 Washington Street,Wellesley Hills,MA 02481