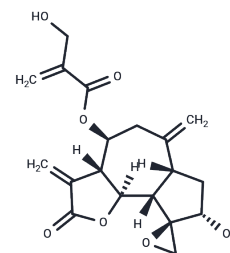


Janerin

Chemical Properties

CAS No. :	64205-84-1
Formula:	C ₁₉ H ₂₂ O ₇
Molecular Weight:	362.37
Storage:	Powder: -20°C for 3 years In solvent: -80°C for 1 year Actual storage temperature shall be subject to the COA.



Biological Description

Description	Janerin is a sesquiterpene lactone.
Targets(IC50)	Others

Preparing Stock Solutions

	1mg	5mg	10mg
1 mM	2.7596 mL	13.7981 mL	27.5961 mL
5 mM	0.5519 mL	2.7596 mL	5.5192 mL
10 mM	0.276 mL	1.3798 mL	2.7596 mL
50 mM	0.0552 mL	0.276 mL	0.5519 mL

Please select the appropriate solvent to prepare the stock solution, according to the solubility of the product in different solvents. Please use it as soon as possible.

Note: The dilution table applies only to solid products. For liquid products, please calculate the stock solution based on the stated concentration and/or density.

Reference

Shakeri A, Amini E, Asili J, Masullo M, Piacente S, Iranshahi M. Screening of several biological activities induced by different sesquiterpene lactones isolated from *Centaurea behen* L. and *Rhaponticum repens* (L.) Hidalgo. *Nat Prod Res.* 2018 Jun;32(12):1436-1440. doi: 10.1080/14786419.2017.1344661. Epub 2017 Jun 23. PubMed PMID: 28641489.

Muhammad I, Takamatsu S, Mossa JS, El-Ferally FS, Walker LA, Clark AM. Cytotoxic sesquiterpene lactones from *Centaurothamnus maximus* and *Vicoa pentanema*. *Phytother Res.* 2003 Feb;17(2):168-73. PubMed PMID: 12601682.

Youssef D, Frahm AW. Constituents of the Egyptian *Centaurea scoparia*; Part II. Guaianolides of the Aerial Parts. *Planta Med.* 1994 Dec;60(6):572-5. PubMed PMID: 17236083.

Inhibitor · Natural Compounds · Compound Libraries · Recombinant Proteins

This product is for Research Use Only · Not for Human or Veterinary or Therapeutic Use

Tel:781-999-4286 E_mail:info@targetmol.com Address:34 Washington Street,Wellesley Hills,MA 02481