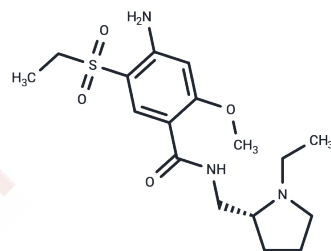


Aramisulpride

Chemical Properties

CAS No. :	71675-90-6
Formula:	C17H27N3O4S
Molecular Weight:	369.48
Storage:	Powder: -20°C for 3 years In solvent: -80°C for 1 year Actual storage temperature shall be subject to the COA.



Biological Description

Description	Aramisulpride is a dual antagonist of the dopamine D2 receptor and serotonin receptor, primarily utilized for investigating metabolic disorders.
Targets(IC50)	Others,5-HT Receptor,Dopamine Receptor

Preparing Stock Solutions

	1mg	5mg	10mg
1 mM	2.7065 mL	13.5325 mL	27.0651 mL
5 mM	0.5413 mL	2.7065 mL	5.413 mL
10 mM	0.2707 mL	1.3533 mL	2.7065 mL
50 mM	0.0541 mL	0.2707 mL	0.5413 mL

Please select the appropriate solvent to prepare the stock solution, according to the solubility of the product in different solvents. Please use it as soon as possible.

Note: The dilution table applies only to solid products. For liquid products, please calculate the stock solution based on the stated concentration and/or density.

Reference

Halse, Reza; Roix, Jeffrey James; Saha, Saurabh. Compositions comprising enantiomers of amisulpride optionally combined with dopamine receptor modulators for treating metabolic disorders. WO2013040164A1

Inhibitor · Natural Compounds · Compound Libraries · Recombinant Proteins

This product is for Research Use Only · Not for Human or Veterinary or Therapeutic Use

Tel: 781-999-4286 E_mail: info@targetmol.com Address: 34 Washington Street, Wellesley Hills, MA 02481