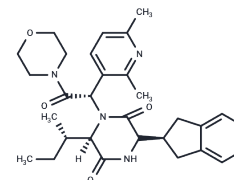
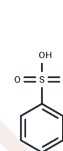


Epelsiban besylate

Chemical Properties

CAS No. :	1159097-48-9
Formula:	C36H44N4O7S
Molecular Weight:	676.83
Storage:	Powder: -20°C for 3 years In solvent: -80°C for 1 year Actual storage temperature shall be subject to the COA.



Biological Description

Description	Epelsiban Besylate is an oral drug that is a highly selective anamol oxytocin receptor antagonist.
Targets(IC50)	Others,Oxytocin Receptor

Preparing Stock Solutions

	1mg	5mg	10mg
1 mM	1.4775 mL	7.3874 mL	14.7748 mL
5 mM	0.2955 mL	1.4775 mL	2.955 mL
10 mM	0.1477 mL	0.7387 mL	1.4775 mL
50 mM	0.0295 mL	0.1477 mL	0.2955 mL

Please select the appropriate solvent to prepare the stock solution, according to the solubility of the product in different solvents. Please use it as soon as possible.

Note: The dilution table applies only to solid products. For liquid products, please calculate the stock solution based on the stated concentration and/or density.

Reference

Mahar KM, Stier B, Fries M, McCallum SW. A single- and multiple-dose study to investigate the pharmacokinetics of epelsiban and its metabolite, GSK2395448, in healthy female volunteers. *Clin Pharmacol Drug Dev.* 2015 Nov;4(6): 418-26. doi: 10.1002/cpdd.210. Epub 2015 Aug 26. PubMed PMID: 27137713.

Shinghal R, Barnes A, Mahar KM, Stier B, Giancaterino L, Condreay LD, Black L, McCallum SW. Safety and efficacy of epelsiban in the treatment of men with premature ejaculation: a randomized, double-blind, placebo-controlled, fixed-dose study. *J Sex Med.* 2013 Oct;10(10):2506-17. doi: 10.1111/jsm.12272. Epub 2013 Aug 12. PubMed PMID: 23937679.

Inhibitor · Natural Compounds · Compound Libraries · Recombinant Proteins

This product is for Research Use Only · Not for Human or Veterinary or Therapeutic Use

Tel:781-999-4286 E_mail:info@targetmol.com Address:34 Washington Street,Wellesley Hills,MA 02481