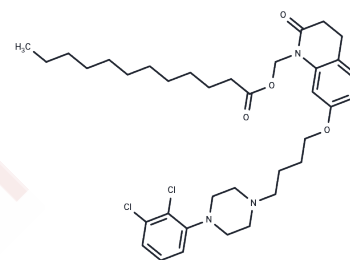


## Aripiprazole Lauroxil

## Chemical Properties

CAS No. :	1259305-29-7
Formula:	C <sub>36</sub> H <sub>51</sub> Cl <sub>2</sub> N <sub>3</sub> O <sub>4</sub>
Molecular Weight:	660.71
Storage:	Powder: -20°C for 3 years   In solvent: -80°C for 1 year Actual storage temperature shall be subject to the COA.



## Biological Description

Description	Aripiprazole lauroxil, the N-acyloxymethyl prodrug form of aripiprazole, a long-acting injectable (LAI) antipsychotic. Aripiprazole lauroxil is cleaved by esterases in vivo to N-hydroxymethyl aripiprazole (lauric acid), which is then cleaved to aripiprazole, which is non-toxic.
Targets(IC50)	Others,5-HT Receptor,Dopamine Receptor
In vivo	Intravenous administration of 1.87?mg/ml Aripiprazole lauroxil bioconversion in vivo involves the formation of an intermediate,?N-hydroxymethyl aripiprazole. The?in vitro? data indicates a high bioconversion of aripiprazole lauroxil, thus, the concentration of? N-hydroxymethyl aripiprazole observed in the animals dosed with aripiprazole lauroxil is surprisingly high[1].

## Solubility Information

Solubility	DMSO: 8 mg/mL (12.11 mM),Sonication is recommended. (< 1 mg/ml refers to the product slightly soluble or insoluble)
In vivo Formulation	10% DMSO+90% Corn Oil: 0.5 mg/mL (0.76 mM),Sonication is recommended. <i>Please add the solvents sequentially, clarifying the solution as much as possible before adding the next one. Dissolve by heating and/or sonication if necessary. Working solution is recommended to be prepared and used immediately. The formulation provided above is for reference purposes only. In vivo formulations may vary and should be modified based on specific experimental conditions.</i>

### Preparing Stock Solutions

---

	1mg	5mg	10mg
1 mM	1.5135 mL	7.5676 mL	15.1352 mL
5 mM	0.3027 mL	1.5135 mL	3.027 mL
10 mM	0.1514 mL	0.7568 mL	1.5135 mL
50 mM	0.0303 mL	0.1514 mL	0.3027 mL

---

Please select the appropriate solvent to prepare the stock solution, according to the solubility of the product in different solvents. Please use it as soon as possible.

Note: The dilution table applies only to solid products. For liquid products, please calculate the stock solution based on the stated concentration and/or density.

### Reference

Jann MW, et al. Long-Acting Injectable Second-Generation Antipsychotics: An Update and Comparison Between Agents. *CNS Drugs*. 2018 Mar;32(3):241-257.

Rohde M, et al. Biological conversion of aripiprazole lauroxil - An N-acyloxymethyl aripiprazole prodrug. *Results Pharma Sci*. 2014 May 2;4:19-25.

**Inhibitor · Natural Compounds · Compound Libraries · Recombinant Proteins**

This product is for Research Use Only · Not for Human or Veterinary or Therapeutic Use

Tel: 781-999-4286 E\_mail: info@targetmol.com Address: 34 Washington Street, Wellesley Hills, MA 02481