

## (±)9-HODE cholesteryl ester

### Chemical Properties

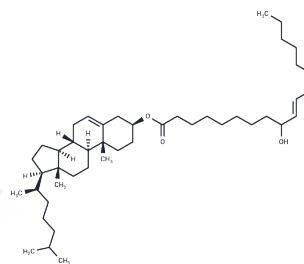
CAS No. : 33783-76-5

Formula: C<sub>45</sub>H<sub>76</sub>O<sub>3</sub>

Molecular Weight: 665.1

Storage: Powder: -20°C for 3 years | In solvent: -80°C for 1 year

Actual storage temperature shall be subject to the COA.



### Biological Description

Description	(±)9-HODE cholesteryl ester, initially extracted from atherosclerotic lesions, is formed through Cu <sup>2+</sup> -catalyzed oxidation of LDL. Subsequent research demonstrated that 15-LO from rabbit reticulocytes and human monocytes can metabolize cholesteryl linoleate, a major LDL component, into 9-HODE cholesteryl ester.
Targets(IC50)	Others,Endogenous Metabolite

### Solubility Information

Solubility	DMF: >50 mg/mL,Sonication is recommended. DMSO: >50 mg/mL,Sonication is recommended. Ethanol: >50 mg/mL,Sonication is recommended. Ethanol:PBS (1:10): <10 µg/mL,Sonication is recommended. (< 1 mg/ml refers to the product slightly soluble or insoluble)
------------	-------------------------------------------------------------------------------------------------------------------------------------------------------------------------------------------------------------------------------------------------------------------------

### Preparing Stock Solutions

	1mg	5mg	10mg
1 mM	1.5035 mL	7.5177 mL	15.0353 mL
5 mM	0.3007 mL	1.5035 mL	3.0071 mL
10 mM	0.1504 mL	0.7518 mL	1.5035 mL
50 mM	0.0301 mL	0.1504 mL	0.3007 mL

Please select the appropriate solvent to prepare the stock solution, according to the solubility of the product in different solvents. Please use it as soon as possible.

Note: The dilution table applies only to solid products. For liquid products, please calculate the stock solution based on the stated concentration and/or density.

**Inhibitor · Natural Compounds · Compound Libraries · Recombinant Proteins**

This product is for Research Use Only · Not for Human or Veterinary or Therapeutic Use

Tel:781-999-4286 E\_mail:info@targetmol.com Address:34 Washington Street,Wellesley Hills,MA 02481