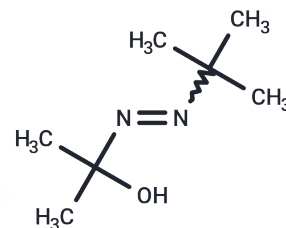


Lucel 3

Chemical Properties

CAS No. :	57910-39-1
Formula:	C ₇ H ₁₆ N ₂ O
Molecular Weight:	144.21
Storage:	Powder: -20°C for 3 years In solvent: -80°C for 1 year Actual storage temperature shall be subject to the COA.



Biological Description

Description	Lucel 3 is a bioactive chemical.
Targets(IC50)	Others

Preparing Stock Solutions

	1mg	5mg	10mg
1 mM	6.9343 mL	34.6717 mL	69.3433 mL
5 mM	1.3869 mL	6.9343 mL	13.8687 mL
10 mM	0.6934 mL	3.4672 mL	6.9343 mL
50 mM	0.1387 mL	0.6934 mL	1.3869 mL

Please select the appropriate solvent to prepare the stock solution, according to the solubility of the product in different solvents. Please use it as soon as possible.

Note: The dilution table applies only to solid products. For liquid products, please calculate the stock solution based on the stated concentration and/or density.

Reference

Yildirim M, Koroglu E, Yucel C, Kirlak S, Sen S. The effect of hospital clown nurse on children's compliance to burn dressing change. *Burns*. 2018 Sep 21. pii: S0305-4179(18)30431-5. doi: 10.1016/j.burns.2018.08.033. [Epub ahead of print] PubMed PMID: 30249435.

Yalcinbayir O, Caliskan E, Ucan Gunduz G, Gelisken O, Kaderli B, Yucel AA. Efficacy of Dexamethasone Implants in Uveitic Macular Edema in Cases with Behçet Disease. *Ophthalmologica*. 2018 Sep 21:1-5. doi: 10.1159/000490674. [Epub ahead of print] PubMed PMID: 30244248.

Çelakıl ME, Yücel BB, Özod UK, Bek K. Anca-associated crescentic glomerulonephritis in a child with isolated renal involvement. *J Bras Nefrol*. 2018 Sep 6. pii: S0101-28002018005031101. doi: 10.1590/2175-8239-jbn-2018-0062. [Epub ahead of print] Portuguese, English. PubMed PMID: 30199560.

Demir MT, Baydin A, Amanvermez R, Erenler AK, Güzel M, Yücel O. Comparison of pentraxin-3 and ischemia-modified albumin with troponin in early diagnosis of acute coronary syndrome. *Bratisl Lek Listy*. 2018;119(8):509-512. doi: 10.4149/BLL_2018_093. PubMed PMID: 30160160.

Inhibitor · Natural Compounds · Compound Libraries · Recombinant Proteins

This product is for Research Use Only· Not for Human or Veterinary or Therapeutic Use

Tel:781-999-4286 E_mail:info@targetmol.com Address:34 Washington Street,Wellesley Hills,MA 02481