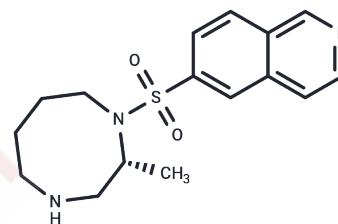


Cotosudil

Chemical Properties

CAS No. :	1258833-31-6
Formula:	C ₁₆ H ₂₁ N ₃ O ₂ S
Molecular Weight:	319.42
Storage:	Powder: -20°C for 3 years In solvent: -80°C for 1 year Actual storage temperature shall be subject to the COA.



Biological Description

Description	Cotosudil is a ROCK kinase inhibitor with antihypertensive activity and is used to treat or prevent diseases or conditions caused by cataracts, cardiovascular or neurodegenerative diseases or nerve damage.
Targets(IC50)	ROCK

Solubility Information

Solubility	DMSO: 30 mg/mL (93.92 mM), Sonication is recommended. (< 1 mg/ml refers to the product slightly soluble or insoluble)
In vivo Formulation	10% DMSO+40% PEG300+5% Tween 80+45% Saline: 2 mg/mL (6.26 mM), Sonication is recommended. <i>Please add the solvents sequentially, clarifying the solution as much as possible before adding the next one. Dissolve by heating and/or sonication if necessary. Working solution is recommended to be prepared and used immediately. The formulation provided above is for reference purposes only. In vivo formulations may vary and should be modified based on specific experimental conditions.</i>

Preparing Stock Solutions

	1mg	5mg	10mg
1 mM	3.1307 mL	15.6534 mL	31.3067 mL
5 mM	0.6261 mL	3.1307 mL	6.2613 mL
10 mM	0.3131 mL	1.5653 mL	3.1307 mL
50 mM	0.0626 mL	0.3131 mL	0.6261 mL

Please select the appropriate solvent to prepare the stock solution, according to the solubility of the product in different solvents. Please use it as soon as possible.

Note: The dilution table applies only to solid products. For liquid products, please calculate the stock solution based on the stated concentration and/or density.

Reference

IYoshihiro Inoue, et al. Prophylactic or therapeutic agent for glaucoma or ocular hypertension. JP2013035802A.

Inhibitor · Natural Compounds · Compound Libraries · Recombinant Proteins

This product is for Research Use Only · Not for Human or Veterinary or Therapeutic Use

Tel:781-999-4286 E_mail:info@targetmol.com Address:34 Washington Street,Wellesley Hills,MA 02481