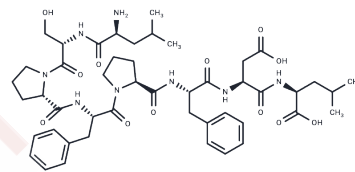


p2Ca

Chemical Properties

CAS No. : 142606-55-1
 Formula: C47H66N8O12
 Molecular Weight: 935.07
 Storage: Keep away from moisture
 Powder: -20°C for 3 years | In solvent: -80°C for 1 year
 Actual storage temperature shall be subject to the COA.



Biological Description

Description p2Ca, a naturally processed peptide that derives from a ubiquitous enzyme, alpha-ketoglutarate dehydrogenase, and is recognized in association with the class I MHC protein, Ld, by a CTL clone (2C).

Solubility Information

Solubility H2O: Soluble,
 (< 1 mg/ml refers to the product slightly soluble or insoluble)

Preparing Stock Solutions

	1mg	5mg	10mg
1 mM	1.0694 mL	5.3472 mL	10.6944 mL
5 mM	0.2139 mL	1.0694 mL	2.1389 mL
10 mM	0.1069 mL	0.5347 mL	1.0694 mL
50 mM	0.0214 mL	0.1069 mL	0.2139 mL

Please select the appropriate solvent to prepare the stock solution, according to the solubility of the product in different solvents. Please use it as soon as possible.

Note: The dilution table applies only to solid products. For liquid products, please calculate the stock solution based on the stated concentration and/or density.

Reference

Hornell TM, et al. Peptide length variants p2Ca and QL9 present distinct conformations to L(d)-specific T cells. J Immunol. 2001 Oct 15;167(8):4207-14.

Inhibitor · Natural Compounds · Compound Libraries · Recombinant Proteins

This product is for Research Use Only · Not for Human or Veterinary or Therapeutic Use

Tel: 781-999-4286 E_mail: info@targetmol.com Address: 34 Washington Street, Wellesley Hills, MA 02481