

Eledoisin Related Peptide 2TFA

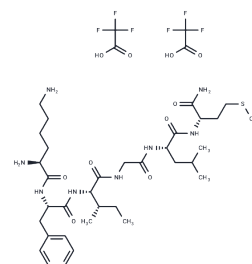
Chemical Properties

CAS No. :

Formula: C38H60F6N8O10S

Molecular Weight: 934.99

Storage: Keep away from moisture
 Powder: -20°C for 3 years | In solvent: -80°C for 1 year
Actual storage temperature shall be subject to the COA.



Biological Description

Description	Eledoisin Related Peptide 2TFA (Eledoisin Related Peptide 2TFA (2990-43-4(free base))) is a tachykinin receptor ligand.
Targets(IC50)	Neurokinin receptor
In vivo	Substance P and eledoisin-related peptide had excitatory effects on respiratory neurones and reflex interneurones, but compared with glutamate-induced effects the excitation was slower in onset and more prolonged in after-discharge. Both rhythmic and evoked activity could be facilitated, and the magnitude of the effect varied directly with the magnitude of the ejecting current. In showing that both glutamate and substance P (and its analogue, eledoisin-related peptide) have excitatory effects on the activity of respiratory neurones and reflex interneurones[1].

Solubility Information

Solubility	DMSO: 10 mM, Sonication is recommended. (< 1 mg/ml refers to the product slightly soluble or insoluble)
------------	--

Preparing Stock Solutions

	1mg	5mg	10mg
1 mM	1.0695 mL	5.3477 mL	10.6953 mL
5 mM	0.2139 mL	1.0695 mL	2.1391 mL
10 mM	0.107 mL	0.5348 mL	1.0695 mL
50 mM	0.0214 mL	0.107 mL	0.2139 mL

Please select the appropriate solvent to prepare the stock solution, according to the solubility of the product in different solvents. Please use it as soon as possible.

Note: The dilution table applies only to solid products. For liquid products, please calculate the stock solution based on the stated concentration and/or density.

Reference

Henry J L , Sessle B J . Effects of glutamate, substance P and eledoisin-related peptide on solitary tract neurones involved in respiration and respiratory reflexes[J]. Neuroscience, 1985, 14(3):863-873.

Guyenet P G , Aghajanian G K . Excitation of neurons in the nucleus locus coeruleus by substance P and related peptides[J]. Brain Research, 1977, 136(1):178-184.

Inhibitor · Natural Compounds · Compound Libraries · Recombinant Proteins

This product is for Research Use Only · Not for Human or Veterinary or Therapeutic Use

Tel:781-999-4286 E_mail:info@targetmol.com Address:34 Washington Street,Wellesley Hills,MA 02481