

1-Naphthaleneacetic acid

Chemical Properties

CAS No. : 86-87-3

Formula: C₁₂H₁₀O₂

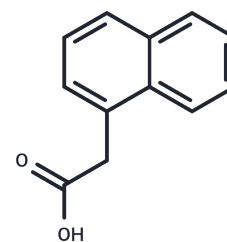
Molecular Weight: 186.21

Keep away from moisture, Keep away from direct sunlight

Storage:

Powder: -20°C for 3 years | In solvent: -80°C for 1 year

Actual storage temperature shall be subject to the COA.



Biological Description

Description	1-Naphthaleneacetic acid (Transplantone) , is widely used in agriculture for various purposes. It is a synthetic plant hormone in the auxin family and is an ingredient in many commercial plant rooting horticultural products.
Targets(IC50)	Phospholipase

Solubility Information

Solubility	DMSO: 65 mg/mL (349.07 mM),Sonication is recommended. (< 1 mg/ml refers to the product slightly soluble or insoluble)
In vivo Formulation	10% DMSO+40% PEG300+5% Tween 80+45% Saline: 2 mg/mL (10.74 mM),Sonication is recommended. <i>Please add the solvents sequentially, clarifying the solution as much as possible before adding the next one. Dissolve by heating and/or sonication if necessary. Working solution is recommended to be prepared and used immediately. The formulation provided above is for reference purposes only. In vivo formulations may vary and should be modified based on specific experimental conditions.</i>

Preparing Stock Solutions

	1mg	5mg	10mg
1 mM	5.3703 mL	26.8514 mL	53.7028 mL
5 mM	1.0741 mL	5.3703 mL	10.7406 mL
10 mM	0.537 mL	2.6851 mL	5.3703 mL
50 mM	0.1074 mL	0.537 mL	1.0741 mL

Please select the appropriate solvent to prepare the stock solution, according to the solubility of the product in different solvents. Please use it as soon as possible.

Note: The dilution table applies only to solid products. For liquid products, please calculate the stock solution based on the stated concentration and/or density.

Reference

Lu, Q. M., et al.: J. Agric. Food Chem., 58, 2763 (2010)

Dippy, J. F. J., et al.: J. Chem. Soci., 4102 (1954)

Inhibitor · Natural Compounds · Compound Libraries · Recombinant Proteins

This product is for Research Use Only · Not for Human or Veterinary or Therapeutic Use

Tel:781-999-4286 E_mail:info@targetmol.com Address:34 Washington Street,Wellesley Hills,MA 02481