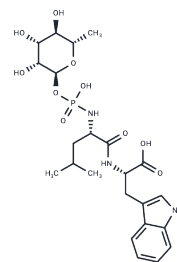


## Phosphoramidon

## Chemical Properties

CAS No. :	36357-77-4
Formula:	C <sub>23</sub> H <sub>34</sub> N <sub>3</sub> O <sub>10</sub> P
Molecular Weight:	543.5
Storage:	Powder: -20°C for 3 years   In solvent: -80°C for 1 year Actual storage temperature shall be subject to the COA.



## Biological Description

Description	Phosphoramidon is a membrane metallo-endopeptidase & endothelin-converting enzyme inhibitor and thermolysin inhibitor, which is obtained from culture filtrate of <i>Streptomyces tanashiensis</i> .
Targets(IC50)	MMP, Neprilysin, Others, Endogenous Metabolite, Angiotensin-converting Enzyme (ACE)

## Solubility Information

Solubility	DMSO: Soluble, ( $< 1$ mg/ml refers to the product slightly soluble or insoluble)
------------	--

## Preparing Stock Solutions

	1mg	5mg	10mg
1 mM	1.8399 mL	9.1996 mL	18.3993 mL
5 mM	0.368 mL	1.8399 mL	3.6799 mL
10 mM	0.184 mL	0.920 mL	1.8399 mL
50 mM	0.0368 mL	0.184 mL	0.368 mL

Please select the appropriate solvent to prepare the stock solution, according to the solubility of the product in different solvents. Please use it as soon as possible.

Note: The dilution table applies only to solid products. For liquid products, please calculate the stock solution based on the stated concentration and/or density.

### Reference

- Barage SH, Sonawane KD. Exploring mode of phosphoramidon and A $\beta$  peptide binding to hECE-1 by molecular dynamics and docking studies. *Protein Pept Lett*. 2014;21(2):140-52. PubMed PMID: 24000822.
- Sun Q, Yang Q, Gong S, Fu Q, Xiao Q. Synthesis and enzymatic evaluation of phosphoramidon and its  $\beta$  anomer: Anomerization of  $\alpha$ -l-rhamnose triacetate upon phosphorylation. *Bioorg Med Chem*. 2013 Nov 1;21(21):6778-87. doi: 10.1016/j.bmc.2013.07.052. Epub 2013 Aug 8. PubMed PMID: 23988485.
- dos Santos MH, da Costa AF, Ferreira BJ, Souza SL, da Silva Lannes P, Santos GS, Mattos-Guaraldi AL, Nagao PE. A phosphoramidon-sensitive metalloprotease induces apoptosis of human endothelial cells by Group B *Streptococcus*. *Antonie Van Leeuwenhoek*. 2013 Dec;104(6):1125-33. doi: 10.1007/s10482-013-0034-y. Epub 2013 Sep 20. PubMed PMID: 24052367.
- Richter S, Wuest M, Bergman CN, Krieger S, Rogers BE, Wuest F. Metabolically Stabilized (68)Ga-NOTA-Bombesin for PET Imaging of Prostate Cancer and Influence of Protease Inhibitor Phosphoramidon. *Mol Pharm*. 2016 Apr 4;13(4):1347-57. doi: 10.1021/acs.molpharmaceut.5b00970. Epub 2016 Mar 23. PubMed PMID: 26973098.

**Inhibitor · Natural Compounds · Compound Libraries · Recombinant Proteins**

This product is for Research Use Only · Not for Human or Veterinary or Therapeutic Use

Tel:781-999-4286 E\_mail:info@targetmol.com Address:34 Washington Street,Wellesley Hills,MA 02481