

## MC-Val-Cit-PAB-Retapamulin

## Chemical Properties

CAS No. : 1639793-15-9

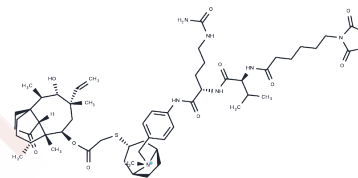
Formula: C<sub>58</sub>H<sub>86</sub>N<sub>7</sub>O<sub>10</sub>S

Molecular Weight: 1073.42

Keep away from direct sunlight

Storage: Powder: -20°C for 3 years | In solvent: -80°C for 1 year

Actual storage temperature shall be subject to the COA.



## Biological Description

Description	MC-Val-Cit-PAB-Retapamulin is a drug-linker conjugate used in antibody-drug conjugates (ADC) that exhibits potent antitumor activity. It employs Retapamulin, a ribosome inhibitor, connected via the ADC linker MC-Val-Cit-PAB.
Targets(IC50)	Drug-Linker Conjugates for ADC,PROTAC Linker

## Preparing Stock Solutions

	1mg	5mg	10mg
1 mM	0.9316 mL	4.658 mL	9.316 mL
5 mM	0.1863 mL	0.9316 mL	1.8632 mL
10 mM	0.0932 mL	0.4658 mL	0.9316 mL
50 mM	0.0186 mL	0.0932 mL	0.1863 mL

Please select the appropriate solvent to prepare the stock solution, according to the solubility of the product in different solvents. Please use it as soon as possible.

Note: The dilution table applies only to solid products. For liquid products, please calculate the stock solution based on the stated concentration and/or density.

## Reference

Staben LR, et al. Targeted drug delivery through the traceless release of tertiary and heteroaryl amines from antibody-drug conjugates. Nat Chem. 2016 Dec;8(12):1112-1119.

**Inhibitor · Natural Compounds · Compound Libraries · Recombinant Proteins**

This product is for Research Use Only · Not for Human or Veterinary or Therapeutic Use

Tel:781-999-4286

E\_mail:info@targetmol.com

Address:34 Washington Street,Wellesley Hills,MA 02481