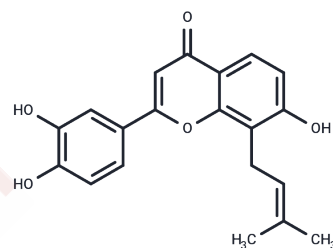


Corylifol C

Chemical Properties

CAS No. :	775351-91-2
Formula:	C ₂₀ H ₁₈ O ₅
Molecular Weight:	338.35
Storage:	Powder: -20°C for 3 years In solvent: -80°C for 1 year Actual storage temperature shall be subject to the COA.



Biological Description

Description	Corylifol C is a natural product isolated from <i>Psoralea corylifolia</i> and an effective protein kinase inhibitor with an IC ₅₀ value of 1.1×10^{-6} µg/ml against EGFR.
Targets(IC ₅₀)	EGFR

Preparing Stock Solutions

	1mg	5mg	10mg
1 mM	2.9555 mL	14.7776 mL	29.5552 mL
5 mM	0.5911 mL	2.9555 mL	5.911 mL
10 mM	0.2956 mL	1.4778 mL	2.9555 mL
50 mM	0.0591 mL	0.2956 mL	0.5911 mL

Please select the appropriate solvent to prepare the stock solution, according to the solubility of the product in different solvents. Please use it as soon as possible.

Note: The dilution table applies only to solid products. For liquid products, please calculate the stock solution based on the stated concentration and/or density.

Reference

Limper C, et al. Compounds isolated from *Psoralea corylifolia* seeds inhibit protein kinase activity and induce apoptotic cell death in mammalian cells. *J Pharm Pharmacol.* 2013;65(9):1393-1408.

Inhibitor · Natural Compounds · Compound Libraries · Recombinant Proteins

This product is for Research Use Only · Not for Human or Veterinary or Therapeutic Use

Tel:781-999-4286 E_mail:info@targetmol.com Address:34 Washington Street,Wellesley Hills,MA 02481