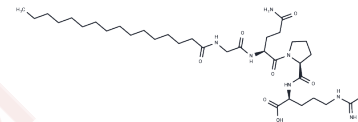


Palmitoyl Tetrapeptide-3

Chemical Properties

CAS No. :	221227-05-0
Formula:	C34H62N8O7
Molecular Weight:	694.91
Storage:	Keep away from moisture Powder: -20°C for 3 years In solvent: -80°C for 1 year <small>Actual storage temperature shall be subject to the COA.</small>



Biological Description

Description	Palmitoyl Tetrapeptide-3 (Rigin) (Rigin) is a synthetic peptide, corresponding to 341-344 amino acid sequence of IgG human H-chain, with phagocytosis stimulating activity. Palmitoyl Tetrapeptide-3 stimulates expression of GCP-2 (Granulocyte Chemotactic Protein), which is a chemotactic protein that can recruit cells involved in the preparation and cleansing of the site, to damaged areas.
Targets(IC50)	Others, Interleukin

Solubility Information

Solubility	H2O: Soluble, (< 1 mg/ml refers to the product slightly soluble or insoluble)
------------	---

Preparing Stock Solutions

	1mg	5mg	10mg
1 mM	1.439 mL	7.1952 mL	14.3904 mL
5 mM	0.2878 mL	1.439 mL	2.8781 mL
10 mM	0.1439 mL	0.7195 mL	1.439 mL
50 mM	0.0288 mL	0.1439 mL	0.2878 mL

Please select the appropriate solvent to prepare the stock solution, according to the solubility of the product in different solvents. Please use it as soon as possible.

Note: The dilution table applies only to solid products. For liquid products, please calculate the stock solution based on the stated concentration and/or density.

Reference

Rocchi R, et al. Synthesis and biological activity of tuftsin and rigin derivatives containing monosaccharides or monosaccharide derivatives. Int J Pept Protein Res. 1987 Feb;29(2):262-75.

Inhibitor · Natural Compounds · Compound Libraries · Recombinant Proteins

This product is for Research Use Only · Not for Human or Veterinary or Therapeutic Use

Tel:781-999-4286 E_mail:info@targetmol.com Address:34 Washington Street,Wellesley Hills,MA 02481