

## Iristectorin A

## Chemical Properties

CAS No. : 37744-61-9

Formula: C<sub>23</sub>H<sub>24</sub>O<sub>12</sub>

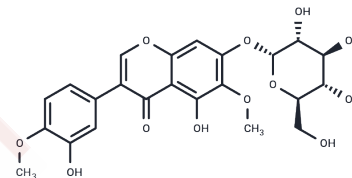
Molecular Weight: 492.43

Storage:

Keep away from direct sunlight, Keep away from moisture, Store at low temperature

Powder: -20°C for 3 years | In solvent: -80°C for 1 year

Actual storage temperature shall be subject to the COA.



## Biological Description

Description	Iristectorin A, an isoflavone compound derived from <i>Iris tectorum</i> Maxim, is a lactate dehydrogenase inhibitor that is used in cancer research.
Targets(IC50)	Dehydrogenase
In vitro	Iristectorin A, a natural product derived from Himalayan iris or blackberry lily among others, exhibits significant anti-tumor activity in vitro[1].

## Solubility Information

Solubility	DMSO: 80 mg/mL (162.46 mM), Sonication is recommended. (< 1 mg/ml refers to the product slightly soluble or insoluble)
------------	---

## Preparing Stock Solutions

	1mg	5mg	10mg
1 mM	2.0307 mL	10.1537 mL	20.3075 mL
5 mM	0.4061 mL	2.0307 mL	4.0615 mL
10 mM	0.2031 mL	1.0154 mL	2.0307 mL
50 mM	0.0406 mL	0.2031 mL	0.4061 mL

Please select the appropriate solvent to prepare the stock solution, according to the solubility of the product in different solvents. Please use it as soon as possible.

Note: The dilution table applies only to solid products. For liquid products, please calculate the stock solution based on the stated concentration and/or density.

Reference

Monthakantirat O, et al. Phenolic constituents of the rhizomes of the Thai medicinal plant *Belamcanda chinensis* with proliferative activity for two breast cancer cell lines. *J Nat Prod.* 2005 Mar;68(3):361-4.

Gao B, Ma Y, Zhang LT, Ren Q. Identification and characterization of the chemical components of *Iris tectorum* Maxim. and evaluation of their nitric oxide inhibitory activity. *Rapid Commun Mass Spectrom.* 2021 Jan 15;35(1): e8959.

**Inhibitor · Natural Compounds · Compound Libraries · Recombinant Proteins**

This product is for Research Use Only · Not for Human or Veterinary or Therapeutic Use

Tel:781-999-4286 E\_mail:info@targetmol.com Address:34 Washington Street,Wellesley Hills,MA 02481