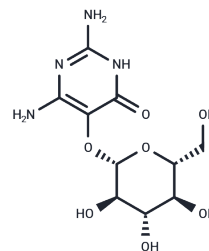


Vicine

Chemical Properties

CAS No. :	152-93-2
Formula:	C ₁₀ H ₁₆ N ₄ O ₇
Molecular Weight:	304.259
Storage:	Powder: -20°C for 3 years In solvent: -80°C for 1 year Actual storage temperature shall be subject to the COA.



Biological Description

Description	Vicine is an xanthone glycoside isolated from the cortex of Polygala tenuifolia, which can be used in studies of expectorants and to promote psychostability.
Targets(IC50)	Others, Drug Metabolite

Solubility Information

Solubility	DMSO: 22.5 mg/mL (73.95 mM), Sonication is recommended. (< 1 mg/ml refers to the product slightly soluble or insoluble)
In vivo Formulation	10% DMSO+40% PEG300+5% Tween 80+45% Saline: 2 mg/mL (6.57 mM), Sonication is recommended. <i>Please add the solvents sequentially, clarifying the solution as much as possible before adding the next one. Dissolve by heating and/or sonication if necessary. Working solution is recommended to be prepared and used immediately. The formulation provided above is for reference purposes only. In vivo formulations may vary and should be modified based on specific experimental conditions.</i>

Preparing Stock Solutions

	1mg	5mg	10mg
1 mM	3.2867 mL	16.4333 mL	32.8666 mL
5 mM	0.6573 mL	3.2867 mL	6.5733 mL
10 mM	0.3287 mL	1.6433 mL	3.2867 mL
50 mM	0.0657 mL	0.3287 mL	0.6573 mL

Please select the appropriate solvent to prepare the stock solution, according to the solubility of the product in different solvents. Please use it as soon as possible.

Note: The dilution table applies only to solid products. For liquid products, please calculate the stock solution based on the stated concentration and/or density.

Reference

Farran MT, et al. Vicine and convicine in common vetch (*Vicia sativa*) seeds enhance beta-cyanoalanine toxicity in male broiler chicks. *Int J Toxicol*. 2002 May-Jun;21(3):201-9.

Inhibitor · Natural Compounds · Compound Libraries · Recombinant Proteins

This product is for Research Use Only· Not for Human or Veterinary or Therapeutic Use

Tel:781-999-4286 E_mail:info@targetmol.com Address:34 Washington Street,Wellesley Hills,MA 02481