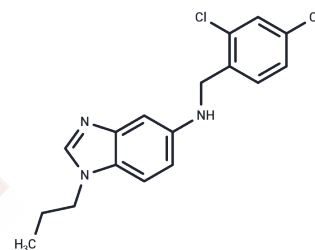


C-215

## Chemical Properties

CAS No. : 912780-51-9  
 Formula: C<sub>17</sub>H<sub>17</sub>Cl<sub>2</sub>N<sub>3</sub>  
 Molecular Weight: 334.24  
 Storage: Powder: -20°C for 3 years | In solvent: -80°C for 1 year  
 Actual storage temperature shall be subject to the COA.



## Biological Description

Description	C-215 is a novel inhibitor of mycobacterial membrane protein large 3 (MmpL3).
Targets(IC50)	Others,Antibacterial

## Solubility Information

Solubility	DMSO: 10 mg/mL (29.92 mM),Sonication is recommended. (< 1 mg/ml refers to the product slightly soluble or insoluble)
------------	---

## Preparing Stock Solutions

	1mg	5mg	10mg
1 mM	2.9919 mL	14.9593 mL	29.9186 mL
5 mM	0.5984 mL	2.9919 mL	5.9837 mL
10 mM	0.2992 mL	1.4959 mL	2.9919 mL
50 mM	0.0598 mL	0.2992 mL	0.5984 mL

Please select the appropriate solvent to prepare the stock solution, according to the solubility of the product in different solvents. Please use it as soon as possible.

Note: The dilution table applies only to solid products. For liquid products, please calculate the stock solution based on the stated concentration and/or density.

## Reference

Bjork P , Jonsson U , Svedberg H , et al. ISOLATION, PARTIAL CHARACTERIZATION, AND MOLECULAR-CLONING OF A HUMAN COLON ADENOCARCINOMA CELL-SURFACE GLYCOPROTEIN RECOGNIZED BY THE C215 MOUSE MONOCLONAL-ANTIBODY[J]. Journal of Biological Chemistry, 1993, 268(32):24232-24241.

**Inhibitor · Natural Compounds · Compound Libraries · Recombinant Proteins**

This product is for Research Use Only · Not for Human or Veterinary or Therapeutic Use

Tel:781-999-4286 E\_mail:info@targetmol.com Address:34 Washington Street,Wellesley Hills,MA 02481