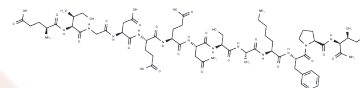


Neuropeptide EI, rat

Chemical Properties

CAS No. :	125934-45-4
Formula:	C63H98N16O23
Molecular Weight:	1447.55
Storage:	Keep away from moisture Powder: -20°C for 3 years In solvent: -80°C for 1 year <small>Actual storage temperature shall be subject to the COA.</small>



Biological Description

Description	Displays functional MCH-antagonist and MSH-agonist activity in different behavioral paradigms.
Targets(IC50)	Melanocortin Receptor, Melanin-concentrating Hormone Receptor (MCHR), GPCR

Solubility Information

Solubility	H2O: Soluble, (< 1 mg/ml refers to the product slightly soluble or insoluble)
------------	---

Preparing Stock Solutions

	1mg	5mg	10mg
1 mM	0.6908 mL	3.4541 mL	6.9082 mL
5 mM	0.1382 mL	0.6908 mL	1.3816 mL
10 mM	0.0691 mL	0.3454 mL	0.6908 mL
50 mM	0.0138 mL	0.0691 mL	0.1382 mL

Please select the appropriate solvent to prepare the stock solution, according to the solubility of the product in different solvents. Please use it as soon as possible.

Note: The dilution table applies only to solid products. For liquid products, please calculate the stock solution based on the stated concentration and/or density.

Reference

Hintermann E, et al. Interaction of melanin-concentrating hormone (MCH), neuropeptide E-I (NEI), neuropeptide G-E (NGE), and alpha-MSH with melanocortin and MCH receptors on mouse B16 melanoma cells. J Recept Signal Transduct Res. 2001 Feb;21(1):93-116.

Inhibitor · Natural Compounds · Compound Libraries · Recombinant Proteins

This product is for Research Use Only · Not for Human or Veterinary or Therapeutic Use

Tel:781-999-4286 E_mail:info@targetmol.com Address:34 Washington Street,Wellesley Hills,MA 02481